

Rapid Test Detecting Aminoglycosides In Milk



3AMINOSENSOR and 4AMINOSENSOR are rapid assay in dipstick format detecting the contamination of milk samples by Aminoglycosides molecules.

3AMINOSENSOR (KIT048) is specific for Neomycin/Paromomycin, (Dihydro)-Streptomycin, and Gentamycin detection. 4AMINOSENSOR (KIT068) is specific for Neomycin, Gentamycin, Kanamycin and (Dihydro)-Streptomycin, detection.

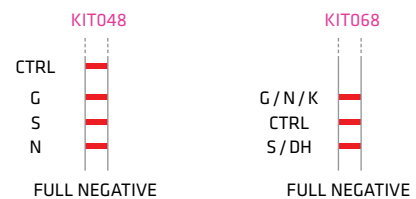
The test can be used in-situ for daily controls or in laboratories for the analysis of series of milk samples. This test does not require any sample processing, cleaning or extraction.

BENEFITS

- X3
X4** **MULTIPLE**
Detection of main aminoglycosides.
- RAPID**
Results in 6 minutes.
- SENSITIVE**
- RELIABLE AND ROBUST**
- USER-FRIENDLY**
Easily performed on site or in lab.
- COST-EFFECTIVE**

RESULTS

Visual interpretation of the result obtained by comparing the intensity of each test line with the control (CTRL) line.



G: Gentamycin - S: streptomycin - N: Neomycin - DH: Dihydrostreptomycin - K: Kanamycin

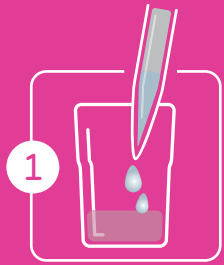
An instrumental reading is also possible with the ReadSensor device.

SENSITIVITY

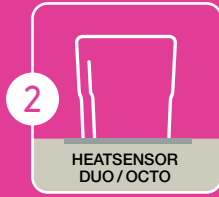
COMPOUNDS	LIMITS OF DETECTION (PPB)		
	KIT048	KIT068	EU MRL
Neomycin	300 - 500	100 - 200	1500
Streptomycin	100 - 200	150 - 200	200
Dihydrostreptomycin	100 - 200	150 - 200	200
Gentamycin	75 - 100	7,5 - 10	100
Kanamycin	-	150 - 200	150
Paromomycin (*)	150 - 250	1000	-
Apramycin (*)	-	1000	-

(*) The test line (Neomycin line) cross-reacts with Paromomycin and Apramycin.

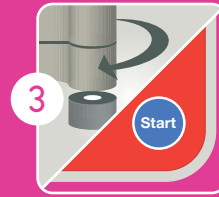
HOW TO USE



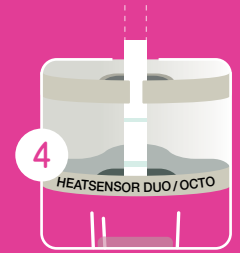
1
Mix milk
and reagents



2
Place the vial
to heating block

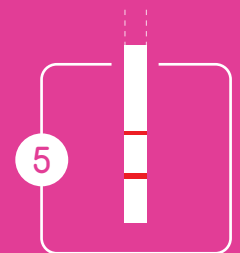


3
Close and
push "START"



4
Place dipstick
to Heatsensor

INCUBATE 6 MINUTES



5
Interpret
results

3AminoSensor 4AminoSensor

PRODUCTS REFERENCES

KIT048

3AMINOSENSOR MK MRL - 96 PC

KIT068

4AMINOSENSOR MK MRL - 96 PC

APP032

HEATSENSOR DUO

APP052

HEATSENSOR OCTO



APP038

READSENSOR ESE SMALL CASE

APP039

READSENSOR ESE FULL CASE



Liège Science Park
Allée de la Cense-Rouge, 98
B-4102 Ougrée (Liège)
BELGIUM

www.unisensor.be

Phone +32 4 252 66 02
Fax +32 4 252 90 55
info@unisensor.be

Reseller



Waverssesteenweg 1110/7 Chaussée de Wavre
OUDERGEM 1160 AUDERGHEM - BELGIUM
T: +32 (0)2 663 15 45- F: +32 (0)2 660 20 98
www.intermed.be - info@intermed.be