



## Eclipse FARM-4G & COMET4

- Do you want to make sure that the milk from your treated cow is free from antibiotics?
- Do you need to check that your tank milk, truck tank or silo is free from any antibiotic substance that can interfere with your production?
- Can I use transport time to analyse milk before arrival to the plant?

Eclipse & COMET4 allow any operator to perform the analysis, receive the result wherever they are and share it in real time.

One drop of milk, one minute of your time. For an automatic analysis of more than 50 antibiotic substances and with real-time results wherever you need it to.

### AUTOMATIC:

- One step, add a drop of milk and run the automatic test.
- Automatic stop and interpretation of results.
- Qualitative (neg/pos) and numerical results on the screen of your smartphone or from the test4all.es platform.
- Easily realizable by any operator.

### CONNECTED:

- Perform the assay anywhere you want, even on the move.
- 8 hours battery life to do the test whenever you need.
- Device & Smartphone always connected via Bluetooth and Wi-Fi: Remote access to results.



### VALIDATIONS:



Eclipse Farm 4G & Comet were approved by the AOAC-RI Performance Tested Methods (PTM) Program for 29 antibiotics. (PTM License Number 022101)



External validation by the Belgian laboratory ILVO.



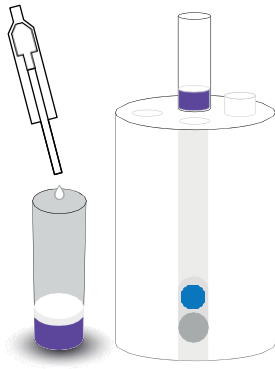
Internal validation: according to ISO 13969:2003

*Antibiotic control by anyone, at anytime and anywhere*

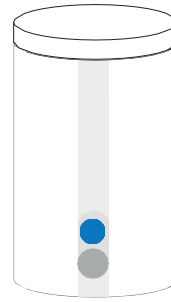
T + (34) 976 731 533 @ info@zeulab.com W www.zeulab.com



## ASSAY PROCEDURE:



1. Add sample  
100µL milk



2. Result:  
On the APP, email or  
test4all.es platform

## LIMITS OF DETECTION:

|                                  | MRL (µG/L, PPB) | LOD (µG/L, PPB) |
|----------------------------------|-----------------|-----------------|
| <b>β-lactams: Penicilins</b>     |                 |                 |
| Penicilin G                      | 4               | 2               |
| Amoxicillin                      | 4               | 3               |
| Ampicillin                       | 4               | 3               |
| Cloxacilin                       | 30              | 25              |
| Oxacilin                         | 30              | 15              |
| <b>β-lactams: Cephalosporins</b> |                 |                 |
| Cephalexin                       | 100             | 50              |
| Cephapirin                       | 60              | 5               |
| Cephalonium                      | 20              | 5               |
| Cefquinome                       | 20              | 20-40           |
| Cephaperazon                     | 50              | 25              |
| Ceftiofur                        | 100             | 25              |
| <b>Tetracyclines</b>             |                 |                 |
| Oxitetracycline                  | 100             | 100             |
| Tetracycline                     | 100             | 100-125         |
| Clortetracycline                 | 100             | 100             |
| Doxicycline                      | -               | 100             |
| <b>Sulphamides</b>               |                 |                 |
| Sulfathiazole                    | 100             | 75              |
| Sulfadiazine                     | 100             | 50              |
| Sulfametazine                    | 100             | 100-125         |
| Sulfadimetoxine                  | 100             | 75              |
| Sulfametoxipiridazine            | 100             | 75              |
| <b>Aminoglycosides</b>           |                 |                 |
| Gentamycin                       | 100             | 150             |
| Neomycin                         | 1500            | 500             |
| DH-Streptomycin                  | 200             | 800             |
| Streptomycin                     | 200             | 1200            |
| <b>Macrolides</b>                |                 |                 |
| Erytromycin                      | 40              | 80-100          |
| Tylosin                          | 50              | 40              |
| <b>Lincosamides</b>              |                 |                 |
| Lincomycin                       | 150             | 150-200         |
| <b>Sulfones</b>                  |                 |                 |
| Dapsone                          | -               | 5               |
| <b>Ansamycins</b>                |                 |                 |
| Rifaximin                        | 60              | 180             |

LOD: Limit Of Detection (µg/L, ppb) in cow milk. MRL: Maximum Residue Limit (µg/Kg) in cow milk

☎ +34) 976 731 533 ✉ info@zeulab.com 🌐 www.zeulab.com