



GRAHAM TEST Safe & Clean[®]

Ready to use slides for detection of
Enterobius vermicularis

New system!!

Safe and clean
Simplifies the sampling
Avoids direct touch with the glass
Protects from possible infections
CE IVD Marked

© Product covered by patent



Enterobius vermicularis is a small nematode parasite of man and popularly known as pinworm which causes intestinal disease.

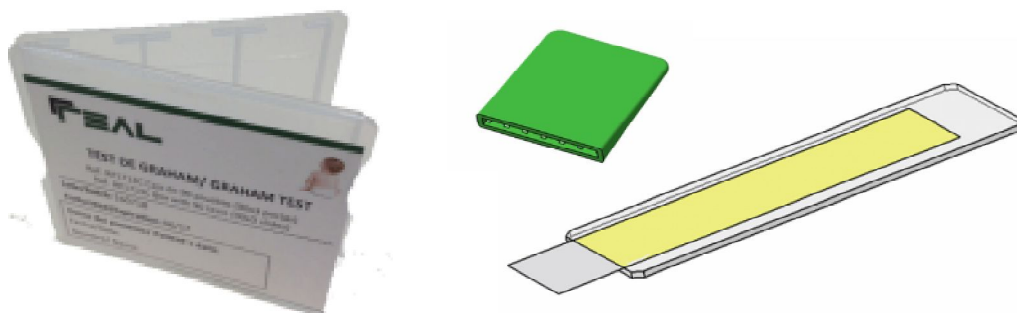
The laboratory diagnosis for the presence of pinworms is done by the recovery of eggs from the perianal area by using the Graham Test and the subsequent microscopic identification. Samples must be collected for 3 consecutive days to be representative.



What is Graham Test Safe & Clean?

It's a system composed of three glass slides with tape, ready to use, and supplied in a plastic box that protects them during transport.

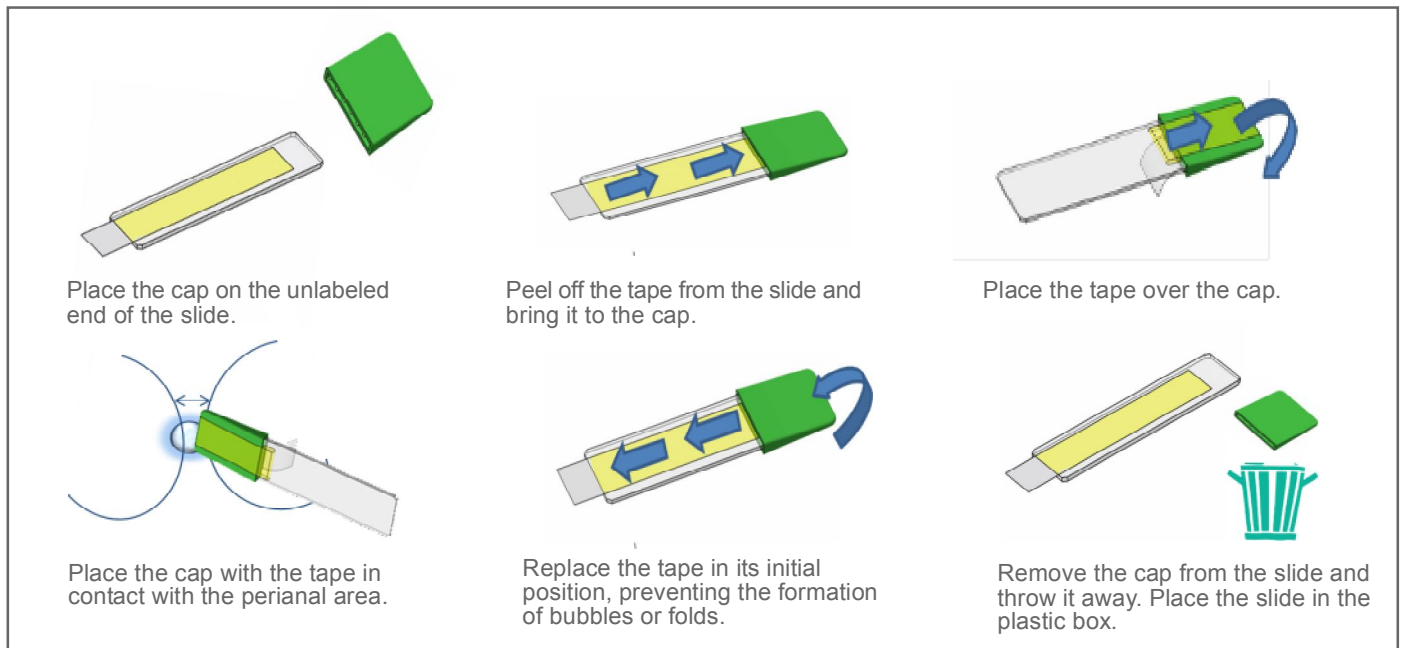
It also includes a plastic, flexible cap, which is coupled to one end of the slide to facilitate sampling.



What are the advantages of using Graham Test Safe & Clean?

- Avoids direct contact with the perianal area, eliminating the possibility of contamination during sampling.
- Prevents patient contact with the glass slide preventing cuts or accidents.
- The plastic box prevents breakage of the slides during transport.

Sampling protocol:



Ordering information:

Referece	Description
RP1713	REAL Graham Test 90 Tests (90 envelopes with 3 slides per envelope)
RPTGSFM	REAL Graham Test Safe & Clean 10 Tests (10 plastic boxes with 3 slides per box plus Safe & Clean system)
RPTGSF	REAL Graham Test Safe & Clean 60 Tests (60 plastic boxes with 3 slides per box plus Safe & Clean system)
RPTGSF1	REAL Graham Test Safe & Clean 50 Tests (50 plastic boxes with 1 slide per box plus Safe & Clean system)