

# UNDERBODY WARMING

AIR-FREE / WATER-FREE WARMING MATTRESS OVERLAYS



## CONDUCTIVE FABRIC PATIENT WARMING BLANKETS & MATTRESSES



### PATIENT SAFETY

The conductive fabric heating element in HotDog mattresses is designed to not interfere with the pressure reduction qualities of an OR mattress—a revolutionary advancement. Nearly all other underbody warming technologies are stiff, increasing the chance of patient bed sores via vascular occlusion and heat-accelerated tissue necrosis. HotDog does not increase vascular occlusion and is controlled at temperatures safe for under the patient.

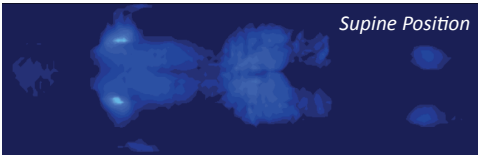
### COST

Most methods of underbody warming are outrageously expensive—often well over \$100 per patient. HotDog underbody warming can be as low as \$2/patient. Cost considerations often force hospitals to warm only difficult cases, but one cannot always tell in advance which case will be difficult. With HotDog warming mattress overlays, all patients can be warmed at no additional cost.

### EASE OF USE

With HotDog warming mattress overlays, there's no water—that means no leaking, no running out of water mid-case, no tech refilling the mattress during surgery. Unlike a large, rolling water-based machine, the small HotDog controller mounts on the IV pole. The system is easy to use and easy to clean. HotDog is the only patient warming system that warms from above (with blankets) and below simultaneously, making it the most complete solution.

### SAFETY - PRESSURE



Pressure map: HotDog U102 Warming Mattress

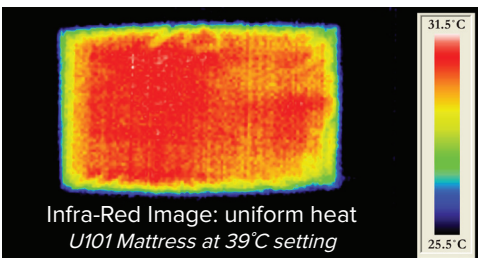


Source: Augustine Biomedical + Design

The clinical consequence of high pressure is the possible development of a pressure ulcer in the soft tissue compressed beneath a bony prominence, especially in the presence of heat.

ThermAssure conductive fabric in HotDog is the only completely flexible fabric heater.

### SAFETY - UNIFORM / SAFE HEAT



Safe Temperatures:  
36-39°C (102.2°F)

With pressure, safe underbody warming should not exceed 40°C by ATM standards.

HotDog heats evenly across the full surface.

### Additional Information

PNs and Dimensions	U101 33 in x 20 in	
Product Description: Underbody Warming Mattress	U102 50 in x 20 in	
Radiolucent	<p><i>Mostly</i> radiolucent. Only the buss bars along the long edge, the sensor and connecting wires are radio-opaque (green area).</p>	
Construction	.75" pressure-relieving foam with flexible heater stretch over upper surface all within a sealed shell	
Versatility	Flexible overlay can be used inside of bean bags and peg boards. Also works with electrosurgical grounding pads and RF sponge counting pads.	
Antimicrobial Shell	Antimicrobial shield embedded in urethane shell	
Edge Seal	Crevice-free (RF-sealed)	
Energy Use	100-150 watts	
Ideal in:	Cardiac Surgery, Burn Units, Multi-procedure plastics, L&D (C-sections), Cath/EP Lab, Orthopedics	