



beldico

Water-free automatic pasteurizer PA45-2020



LIFE STARTS WITH US



Babies are extremely sensitive patients: their immune systems and digestive systems are still maturing in the first few months after their birth.

When direct breastfeeding is not possible, minimising the risk of infection for the child and providing good quality milk becomes the top priority.

Secure the preparation of baby bottles breast milk or formula in a **hygienic environment**

Automated and electronically controlled, the PA45-2020 pasteurizer offers a pre-defined 30-minute pasteurization cycle at a temperature of $62.5^{\circ}\text{C} \pm 0.5^{\circ}\text{C}$, according to the Holder method, and provides rapid, automated cooling to 4°C max.

The Beldico pasteurizer heats and cools the milk by contact in a **perfectly dry way**, without air circulation, **thus limiting the risk of transmission of germs** to the newborn, while reducing the economic and environmental impact of pasteurization and thawing (defrosting).

• **HYGIENIC** : A dry contact heating and cooling technique that reduces the risk of external germs developing. Smooth surfaces for easy cleaning and disinfection of the device.*

• **QUICK & SAFE** : A full cycle lasting 2 hours on average, which includes preheating, pasteurization and cooling. A thawing milk program is installed.

• **RELIABLE & ACCURATE** : 7 temperature sensors regulate the cycle. Automatic troubleshooting and reporting on all settings.

• **PRACTICAL & VERSATILE** : 3 heating blocks for 14, 28 or 42 bottles. Suitable for 50, 130 or 240 ml bottles. Maximum capacity of 10 L pasteurized milk per pasteurization cycle.

Pasteurization according to the Holder method at $62.5^{\circ}\text{C} \pm 0.5^{\circ}\text{C}$ for 30 minutes eliminates significant viruses and bacteria, while maintaining adequate amounts of immunoglobulins, lactoferrin and lysozyme in breast milk.



* Contact us for a list of disinfection products that are compatible with the Beldico pasteurizer and inserts.

A controlled pasteurization process

The PA45-2020 pasteurizer is equipped with a multi-channel process and program controller which is password-protected and easy to use.

Every time it is switched on, an automatic diagnostic test of all settings is made. Throughout the entire pasteurization cycle, the pasteurizer continuously analyses the readings of the temperatures of 7 T° control sensors to ensure the temperature regulation :

- In each of the 3 blocks, a T° sensor inserted into a « reference bottle » monitors the temperature of the milk
- 3 T° sensors monitor the temperature of the heating blocks
- 1 T° sensor monitors the temperature of the coolant

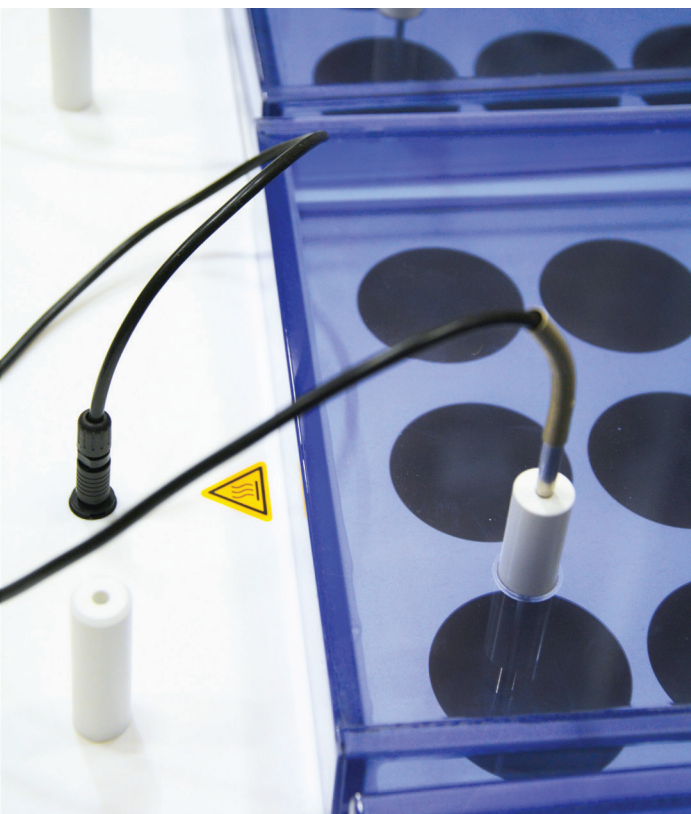
A touch screen allows the user to track process settings at any time during the full pasteurization process.



Traceability of each pasteurization cycle

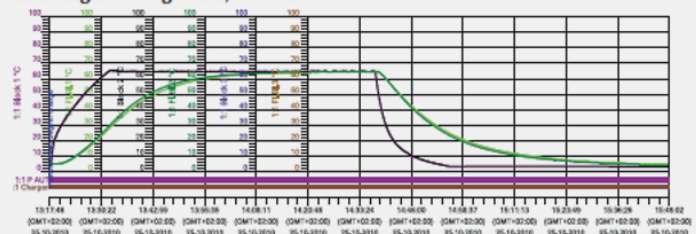
The PA45-2020 pasteurizer allows instant and continuous recording of measured temperatures, timing, date and all events encountered (power supply on/off, sensor alerts, etc.).

The data is stored in the pasteurizer and can then be loaded onto a PC via USB or Ethernet connection in order to be analyzed and printed in different formats.

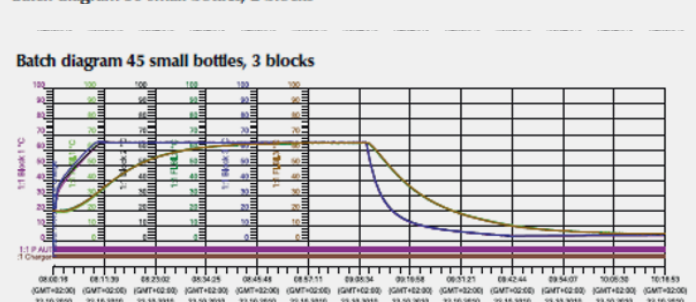


Examples of traceability curves obtained for 2 different pasteurization cycles :

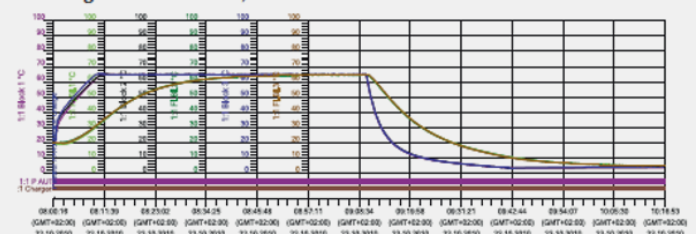
Batch diagram 30 big bottles, 2 blocks



Batch diagram 30 small bottles, 2 blocks



Batch diagram 45 small bottles, 3 blocks





TECHNICAL SHEET

Standard specifications

For optimum efficiency in heating, pasteurizing and cooling of the milk, the bottles must be perfectly in contact with the sides of the bottle cavity in the pasteurizer: it is possible to customize the bottle cavities.

Heating and cooling technique	Dry contact
Maximum capacity	3 x 14 50ml, 130ml and/or 240ml bottles
Dimensions of a Beldico bottle insertion cavity	The standard dimensions of the holes are adjusted to the dimensions of the Beldico feeding bottles : <ul style="list-style-type: none"> • 50ml : height = 74.0 mm / external diameter = 35 mm • 130ml : height = 98.5 mm / external diameter = 53.2 mm • 240ml : height = 152.5 mm / external diameter = 53.2 mm Possibility of customising the bottle cavities.
Reducing inserts	5101891 / PA45-50ML : insert for 50ml bottle 5100112 / AE-RED-6 : Insert for 130ml bottle 5100113 / Stick AE-RED-6 : Stick for removing the inserts
Full cycle time	2 hours on average, including 30 minutes of pasteurization at 62.5°C ± 0.5°C.
Visual and audible alarms	Yes, at the end of the cycle and in case of an error
Voltage	3 x 230V (380V) – 50Hz
Power consumption	1600 Watts per block
Coolant	60 liters
Cooling	1260 Watts
Fuse	3 x 16 Amp
Level of protection	IP40
Type of electric socket	Three-phase socket
Dimensions	117 x 55 x 95 cm
Weight (empty, without coolant)	245 kg
Conditions for use	From +5°C to +21°C
Storage and transport conditions	From -10°C to +50°C
Standards	EN 61326-1, EN61000-3, EN61000-4, EN55011 CE marking
Warranty	1 year

BEN-PAST-062021-V1 - Design : big communication - Photos : -Agence Phanie / Beldico- Document and photos: non-contractual, may be modified without prior notice.

Beldico develops, produces and markets medical devices for feeding babies and focuses particularly on the specific needs of newborn and prematurely born babies

Bottles – breastshields – teats – pacifiers
Breast milk expression and handling
Breast milk or formula warming

Manufacturer

AERNE ANALYTIC E.K

GERMANY

www.aerne-analytic.de

Distributors

INTERNATIONAL MEDICAL PRODUCTS S.A.

Chaussée de Wavre 1110/7

BE-1160 Auderghem

Bruxelles

BELGIUM

Tel : 0032 (0) 2 660 50 75

www.intermed.be

BELDICO B.V.

Marketing 22b

NL-6921 RE Duiven

NEDERLAND

Tel : 0031 (0) 263 210 210

www.beldico.nl

BELDICO france S.A.S

ZA Node Park Touraine

Rue Gilles de Gennes-BP8

F-37310 Tauxigny

FRANCE

Tel : 0033 (0) 247 255 650

www.beldico.fr