



# PRODUCT GUIDE **2018/19**



**SURGICAL CHAIRS & TABLES** FOR EYE- & MICROSURGERY

ENJOY QUALITY AND DESIGN



## ABOUT US

UFSK-OSYS	4 – 5
Innovation & Quality	6 – 7
MTR – Mobile Table Rotation	8 – 9
Quality characters	10 – 11

## TREATMENT CHAIRS



eyeForce  
12 – 19



500 XLE  
20 – 29



500 XLE comfort  
22 – 29



500 XLS  
30 – 35



500 bariatric  
36 – 41

## SURGEON'S STOOLS



surgiForce  
42 – 43



surgiTrend  
44 – 45

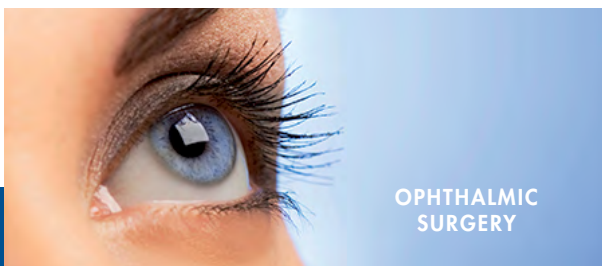


surgiLine  
46 – 47

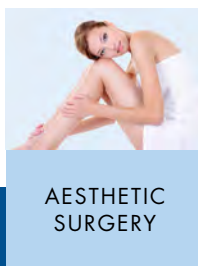
## PATIENT- & EQUIPMENT PROTECTION



stayClean treatment chair cover drape  
62 – 63



OPHTHALMIC  
SURGERY



AESTHETIC  
SURGERY



DENTAL  
SURGERY



ENT  
SURGERY



MICRO  
SURGERY



ORAL &  
MAXILLOFACIAL

# PRECISION AND EFFICIENCY IN MICROSURGERY EVEN AT HIGH PATIENT TURNOVER.





## ASSISTANT’S STOOLS

			
assistTrend 48	assistLine 49	assistPro F & assistPro H 50	easyPro F, easyPro H & easyPro R 51

## ACCESSORIES

supportLine	66
Accessories all purpose	67
Upholstery Color	68 – 69
Classifikations	70 – 73
Insights & Performances	74 – 75

## TRANSPORT- AND RELAXING CHAIRS

	
motionLine 58 – 59	motionLine-E 60 – 61

## TREATMENT TABLES

	
400 XL 54 – 55	2002 56 – 57





GLOBAL

## Growth and Development

Founded in 1975 in Regensburg, UFSK-OSYS develops innovative technologies that benefit surgeons, patients and staff at hospitals and clinics around the world. We are committed to the continuing development of high-quality medical products and systems that offer customers the best price to performance value. Germany's rich tradition of precision craftsmanship and engineering is evident in the construction of all of our tables and chairs.

Since its inception, UFSK-OSYS has experienced phenomenal growth. We are always looking for new opportunities to develop technologies that improve patient treatment and decrease the rising costs of medical care. With the collaboration of our specialized partners and distributors, our products are competitive in markets across the globe.



*How our delivery system works: Our products will be shipped to you on time from our distribution center in Germany. All our products are assembled, tested and packed securely.*





# PRESENCE



**Christian Scherrieble:**

*"We build operating tables and surgical chairs for physicians and patients with a keen understanding of quality and outstanding comfort!"*

**Jürgen Scherrieble:**

*"We develop products for the most brilliant machine there is – the human body".*

## All over the world – it's all about you!

It is these principles by which our highly-qualified professional staff, supported by state-of-the-art production technologies, strives to continually optimize the quality of our products and rightfully attaches the precious "Made in Germany" seal of quality to every UFSK-OSYS product.

Certification in accordance with ISO 13485 underscores the high priority of quality assurance and quality optimization upheld by our organization.

One of our products' most outstanding characteristic is their mobility – i.e. their easy maneuverability by a single person – which is particularly indispensable for

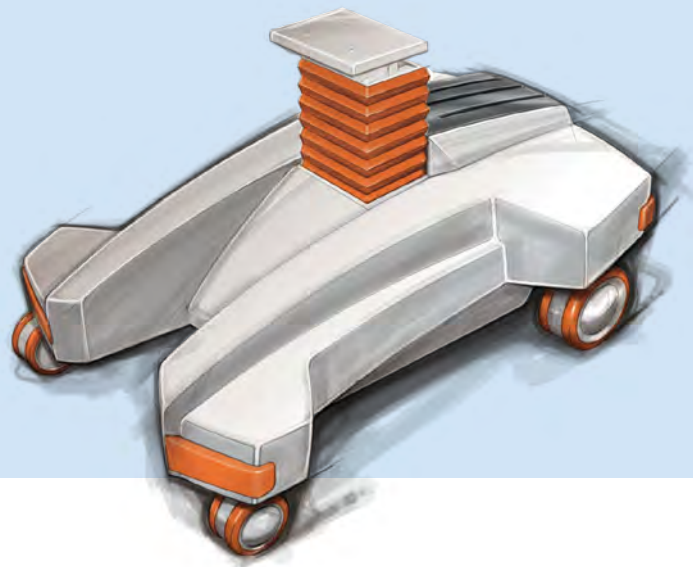
**"MOBILE TABLE ROTATION":  
SURGERY ACCORDING TO THE PRINCIPLE OF ROTATION**

for back-friendly and efficient working. It is precisely this quality which makes our products trend-setting, market-leading, and superior to conventional industry solutions.

**MADE IN GERMANY**

Design | Construction | Manufacturing





## ***Patient-oriented perfection down to the smallest detail***

As an owner-managed company, we make our customers' needs and requirements our number-one priority. This includes fast and flexible reactions to their wishes and a range of customized solutions which not only meet our customers' expectations and requirements but actually exceeds them. Every year, more than 1.500 operating tables and surgeon's chairs leave our production facilities for their mobile destinations in outpatient operating rooms all over the world.

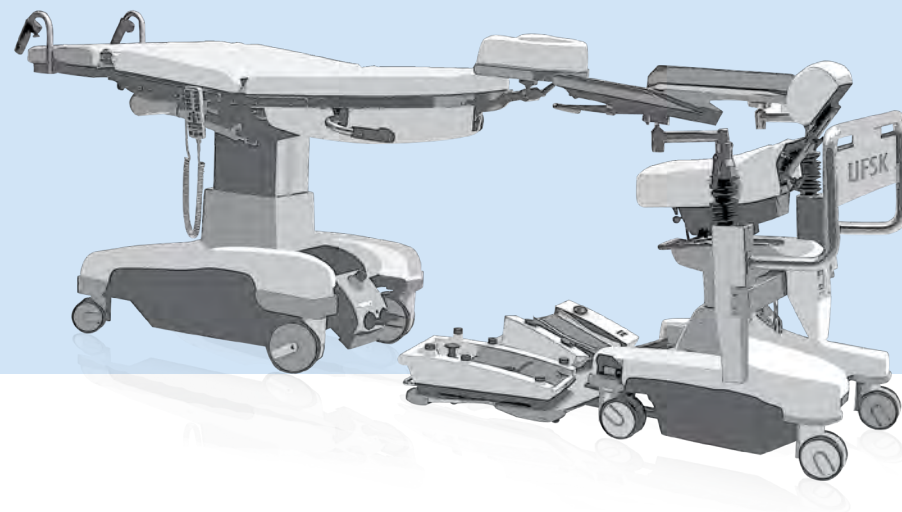
Our high export share of nearly 75 % is testimony to the outstanding ease of integration of our products in existing operating facilities. While UFSK-OSYS has traditionally held a large market share in Germany, we have in the meantime also succeeded in creating an international presence which is nothing short of unrivalled.

We believe in all of your ideas and suggestions as an opportunity to get even better. We believe in growing along with our tasks. The outstanding dedication of every single one of our employees, our carefully planned processes, our high level of specialization in the field of ophthalmology, and our long years of experience ensure the highest quality of our products and services.

### **OUR PHILOSOPHY: HAVING THE RIGHT PERSPECTIVE FOR MORE COMFORT AND WELL-BEING.**

Our relationship with our customers is characterized by reliability, honesty, and good partnership. It is precisely these view and values which are crucial for maintaining our most precious asset: the stability of our company.





## ***Know-how and precision***

Whether for private practices or for clinics – it is our job to put together the best and most effective package to suit your specific needs and requirement – tailored from the abundance of options available at our fingertips. Our know-how in all matters of consulting, development, and manufacture makes us a powerful and competent partner capable of serving you with utmost precision down to the smallest detail – for your fullest confidence in our abilities and our products.

### ***PATIENT COMFORT AND USER PROTECTION ARE OUR NUMBER-ONE PRIORITIES***

Our special focus is on ensuring back-friendly recumbent and sitting positions and on keeping the back healthy during patient

transports. UFSK-OSYS allows you to set new standards in patient friendliness: the comfort and safety of our reclining seats is extremely important to us. The safety for staff and patients, in combination with the guaranteed high level patient turnover, provide physicians with complete freedom in their day-to-day OR-work.







*Charlottenklinik Stuttgart.*

## ***Surgery according to the principle of rotation***

Less and less time to treat an increasing number of patients? Tight calculations and a drop in return on investments? Clinic-proven rotational systems help to significantly cut down on average surgery times – because every minute counts.

Mobile Table Rotation is the key to enhanced professional success! Because Mobile Table Rotation allows you to significantly increase the efficiency of your operating cycles. Thanks to the mobility of the UFSK-OSYS operating table, it is possible to forward the patient from preoperative preparation room directly into the operating room – without having to make the patient get up. After surgery, the patient can be forwarded on that same reclining table into the recovery room. In no time, your operating station will be available again for your next patients. This guarantees you a high patient turnover – while saving you time and money. State-of-the-art equipment, combined with the use of e.g. three mobile operating tables per operating room, ensures cost-effective and

efficient work thanks to the principle of rotation. While you are operating on a patient, your staff can prepare another patient for surgery at the same time while your previous patient can relax in the recovery room. Your patient never needs to leave his or her seated position. At the touch of a button, the surgical chair conveniently turns into an operating table – for maximum comfort right from the outset.

Make an important contribution to your staff's safety and prevention against accidents: UFSK-OSYS reclining treatment tables are an investment in your staff's safety and protection against accidents. The use of our operating tables significantly facilitates the work of nurses, attendants, and assistant physicians: all our reclining treatment tables and stools are characterized by optimum handling characteristics, and, thanks to the world's one and only "Steering Guide", are particularly easy to maneuver and move around by a single person – without

a great deal of effort. For your staff, this means: 30 % workload reduction and protection of the intervertebral disks and back. For physicians and clinics, UFSK-OSYS equipment makes an important contribution to keeping your staff healthy and happy.

Increase the time and cost effectiveness of your facility: you will be able to operate on more patients during the same time frame while having more time to devote to each individual patient. Thanks to their multi-functional capacities, our operating tables can be ideally integrated into existing equipment and will pay for themselves within a very short period of time. Set new standards in patient friendliness with UFSK-OSYS: the comfort and safety of our reclining seats are our top priority.

The safety provided for patients and staff alike, combined with the guaranteed high patient turnover, translate into complete freedom for the physician in his or her day-to-day OR-work.

## **COST REDUCTION THROUGH IMPROVED EFFICIENCY**



#### **Improved Preoperative Preparation**

Headrest, backrest, seat surface and footrest are infinitely adjustable via servomotors – at the touch of a button – allowing you to immediately create the perfect surgery conditions for surgeon and patient alike – without losing unnecessary time.



#### **The perfect Surgical Position**

Utilizing the chair's memory function, a surgeon can retrieve his or her ideal patient position at the push of a button. Total ergonomic design ensures outstanding comfort – before, during and after a procedure.



#### **Innovative Patient Transport**

The “intelligent” chassis ensures effortless patient transport even through narrow passages and on longer routes.



#### **Enhanced Postoperative Relaxation**

From the operating room directly to the wake-up phase. Allow your patients to start recuperating right away in an anatomically correct relaxation position which is initiated at the touch of a button – without need of first shifting or relocating the patient.

# **Prepare, Operate, Recover on one Chair.**

MOBILE TABLE ROTATION



#### **Simple and Secure Access**

The low access and sitting height support even physically handicapped patients while getting into the stool.



#### **Comfortable and Convenient Exit**

The chair automatically adjusts to the exit position allowing patients to depart easily and safely.



eyeForce



500 XLE



## Our quality features at a single glance

In addition to bringing you an optimized price-performance ratio, all our products come with special quality features designed to benefit staff, surgeons, and patients alike while making daily work life easier, especially in high patient-turnover surgery environments.



**Advantages  
for the surgeon**



**Advantages  
for the assistant**



**Advantages  
for the patient**



### Steering Guide

- Facilitates the directional pushing by only a single person while protecting that person's back muscles against strain



### Mobility

- Its lightweight construction reduces the treatment chair's weight
- 360-degree rotating double casters



### Memory Auto-Run

- Move chair into pre-programmed positions at the push of a button
- The auto-run functions moves the chair automatically into the desired position
- Ergonomic design to protect the back of staff and patients alike



### Electronic brake system

- Allows you to set the brake with the push of a button – for no more cumbersome brake levers in the staff's foot area



500 XLE comfort



500 XLS



500 bariatric



#### Max. payload

- Maximum patient weight admissible on the equipment



#### Battery powered

- Battery-operated; independent from the power supply; perfectly mobile
- Powerful, eco-friendly batteries
- User-friendly back-up system



#### Enormous legroom

- Ensure optimum surgeon's access to the patient



#### Foot keypad

- Removable foot keypad allowing a variety of adjusting options



#### Ergonomics

- Optimized patient positioning
- Ergonomically adjustable 4-element upper frame
- All four elements of the support surface are separately adjustable via the manual keypad



#### Premium upholstery

- High-grade, easy-to-clean, and shape retaining
- Anti-microbially treated, hygienic, mildew-retardant
- Flame retardant and waterproof



#### Headrest element

- 3-dimensionally adjustable headrest element
- Manually or electronically adjustable



#### Service-friendly

- Easy maintenance and care



#### Pop-up joystick

- Foot operation via joystick for sensitive chair adjustment



#### e-drive system

- Electronic pushing aid, very easy to use



#### Extension system SES

- Low patient access height and very little need for repositioning thanks to automatic length compensation by the footrest and legrest elements
- The patient remains completely relaxed



Order No. 18000000

## ADVANTAGES



- Mains-independent operation thanks to powerful and environmentally friendly batteries (about 100 surgery cycles), quickly exchangeable via backup battery drawer
- Tilttable foot control via two 4-way joysticks plus activation switch allow sensitive and precise chair adjustment even after the surgeon is already aseptic
- Manual keypad with five individually programmable memo positions, reset button, auto-run function and battery level display
- The 3-D and longitudinally adjustable headrest element with head molding ensure safe and correct positioning of the patient's head
- Ample legroom for the surgeon - for optimized access to the patients head, also temporal



- Lightweight travel gear made of cast aluminum with four fully rotating double-run casters for spine friendly and easy rolling motion
- Optimized controlled handling of the chair by only a single person thanks to the electronically controlled barking system with "Steering Guide" function
- The materials and workmanship satisfy the most stringent hygienic requirements
- Activation/deactivation of the "Steering Guide" at the head and foot ends via manual keypad or micro-switches at the push handles
- Electronic wheel brake acting on four wheels
- Easy, mobile and user friendly handling



- The extension system prevents the patient from sliding down the chair
- Allows adjustment of the reclining surface to suit individual patient needs
- Very low access height





Manual keypad with 5 freely configurable memory positions, reset button, and auto-run function.



3-dimensionally and longitudinally adjustable headrest element with head molding.



Standard rails 25 x 10 mm for the attachment of a wide range of accessories.



Electronic braking system with "Steering Guide" function acting on all wheels.



Retractable push handles at the foot end allow direct patient repositioning from a stationary bed without any obstacles.



Battery drawer for easy and rapid battery changes.

## EQUIPMENT



Push handles at the head and foot ends for easy maneuvering. "Steering Guide" buttons on every right push handle.



Easy recharging of the equipment thanks to charging adapter and integrated battery charger circuit board.



Extra security thanks to exchangeable battery drawer (changing system). Up to 100 operating circles per battery charge.

Lightweight aluminum travel gear with four fully rotating double casters.

Tiltable foot control element for sensitive chair adjustment.



Optical recognition of the wheel positioning function:



decelerated



directional



unlimited





## e-drive system

- Electronic pushing aid,  
very easy to use

Order No. 18000000 + 33160000

## The ease of pushing

e-Drive system for effortless and rapid movement of the chair over long distances. The innovative optional e-drive system consists of a 5th wheel with drive motor. It serves as a pushing aid for easy forward and backward movement – with an extra range of 2 kilometers per battery charge.

The system's operation is identical to that of the “Steering Guide” system, via the respective push handles with potentiometer for infinite and precise speed adjustment. It is possible to integrate the system any time at a later date. Powerful yet gentle.



**We-drive  
your OR**

*Easy to use and efficient!  
Pushing aid for easy and  
spine friendly forward and  
backward movement.*



*Left push handle:  
for forward and backward  
movements.*



*Right push handle:  
potentiometer for infinitely  
adjustable movements at  
millimeter accuracy.*



*“Steering Guide” micro-  
switch (at the head and  
foot ends, on the right)  
integrated in the push  
handle for directional  
pushing.*



Folding-down push handle at the foot end with integrated "Steering Guide" micro-switch on the right push handle.



Push handle at the left head end with a lever for moving the treatment chair forward and back.

Push handle at the right head end with a potentiometer and "Steering Guide" micro-switch.

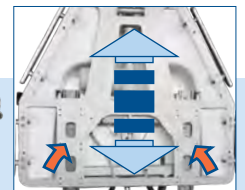


## Made for your health

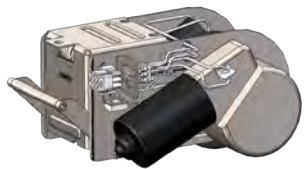
As a surgeon, you and your team are performing extremely strenuous physical and mental work. It is therefore sensible to reduce your stress load to a minimum and switch to the innovative treatment chair eyeForce. Create your own optimized working conditions and avoid unnecessary stress for your entire surgery team by setting up a workplace customized to your personal needs. In combination with the ergonomic surgeon's stool, surgiForce, eyeForce is the perfect working platform for surgeons and their teams in ophthalmic or micro-surgery.

### Who would have thought it possible?

*This is how far your staff pushes a load of 300 kilograms per year: approximately 70 meters per surgery round; 2.500 to 10.000 surgeries per year; up to 800 kilometers per year – »all in all an amazing feat!«*



The SES extension system prevents patients from sliding while moving them from sitting to recumbent positions, thus obviating the need for patient repositioning. Additionally, the SES helps reduce the access height by 50 millimeters.



E-DRIVE

Order No. 33160000



BACKUP BATTERY DRAWER  
incl. batteries

Order No. 33390000



PADDED ARM BOARD  
with universal joint, incl.  
mounting clamp

Order No. 30110000



SIDE PARTS  
(right+left) swiveling incl.  
locking, upholstered

Order No. 31020000



FLEXIBLE SURGICAL DRAPE  
SUPPORT ROD  
(mounting clamp 30900000  
not included)  
with oxygen connection

Order No. 30330000



FLEXIBLE SURGICAL DRAPE  
SUPPORT ROD  
(mounting clamp 30900000  
not included)  
without oxygen connection

Order No. 30320000



WRIST REST

incl. mounting plate  
30130000, adjustable  
Order No. 30140000



WRIST REST

incl. mounting plate  
30130000, adjustable, tiltable  
Order No. 30140005



HAND REMOTE BRACKET,  
PVC

Order No. 30180009



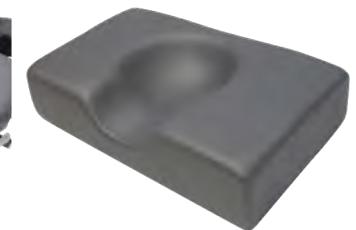
HAND CONTROL HOLDER  
for attachment onto an I.V.  
Pole ø 25/18 mm, PVC

Order No. 30270006



SIDE PARTS  
(right + left) incl. quick-release  
clamp for mounting on norm  
rail, 580 x 200 mm

Order No. 33510050



HEAD FIXATION PILLOW  
with hollow (rubins pillow),  
41x25cm, height: 10 cm

Order No. 30220000



# eyeForce

## ACCESSORIES



HEAD PART BUMPER  
stainless steel  
Order No. 30280000



MONITOR ARM  
stainless steel, swiveling, incl.  
extendible I.V. Pole  $\varnothing$  25 mm  
Order No. 30240000



MONITOR ARM  
stainless steel, not swiveling,  
incl. extendible I.V. Pole  
 $\varnothing$  25 mm  
Order No. 33340000



FOOT PART EXTENSION  
attachable, incl. norm rail  
Order No. 33510002



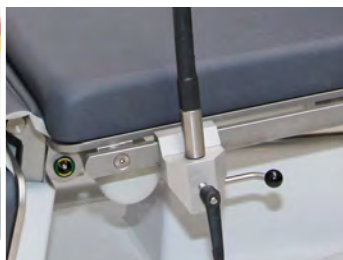
STEP  
Order No. 33510042



FOOT PROTECTION FOIL  
Order No. 33280000



OXYGEN CYLINDER HOLDER  
Order No. 30720001



MOUNTING CLAMP  
polished aluminium, with  
quick clamp lever for norm  
rail 25 x 10 mm incl. locking  
device  
Order No. 30900000



MOUNTING CLAMP  
CNS  
Order No. 30260000



MOUNTING PLATE  
stainless steel for the wrist rest  
30140000  
Order No. 30130000



INSTRUMENT TABLE  
50 x 30 x 1.5 cm, height-ad-  
justable, swiveling, detachable,  
incl. monitor arm  
Order No. 30650003

# eyeForce

## REFERENCES

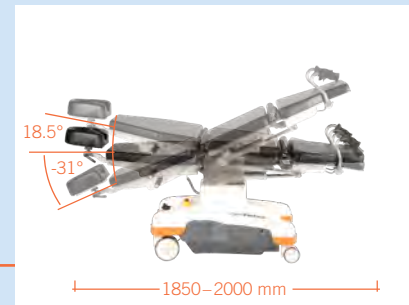


**PENINSULA EYE SURGERY CENTER**  
**DAVID F. CHANG, MD**  
LOS ALTOS, US



**HOPITAUX ROBERT SCHUMAN**  
**CLINIQUE ST. MARIE**  
ESCH-SUR-ALZETTE, LU

FURTHER REFERENCES: [UFSK-OSYS.COM/REFERENCES](http://UFSK-OSYS.COM/REFERENCES)



## SPECIFICATIONS

### Chassis

- Outside length 895 mm
- Outside width 662 mm
- Brake system acting on all four wheels
- Directional wheel guidance ("Steering Guide"), easily activated at the push of a button
- Caster diameter, electrically conductive  $\varnothing$  150/100 mm
- Foot control element with joystick (total up/down, head up/down, back up/down, Trendelenburg up/down)
- Emergency stop button
- Optional pushing aid drive (e-Drive)
- With equipotential bonding connection

### Lifting Column

- Max. lifting force 230 mm
- Max. patient weight 250 kg

### Upper Frame

- 4-part support frame (head, back, seat, foot)
- Length 1,850–2,000 mm
- Width of upholstery 650 mm
- Width incl. norm rails 700 mm

- Headrest – stepless adjustment of length and angle  $-31^{\circ}/+18.5^{\circ}$
- Backrest adjustment  $0^{\circ}/+75.8^{\circ}$
- Footrest adjustment  $0^{\circ}/-78.3^{\circ}$
- Trendelenburg/Reverse Trendelenburg  $-23.7^{\circ}/+8.4^{\circ}$
- Height adjustment range 607–837 mm
- Standard stainless steel side rails on both sides 25 x 10 mm
- Removable upholstery, standard color in anthracite
- Tundra skai colors see color chart

### Electronic Control

- Manual keypad with 5 individually programmable memory positions, auto-run function, reset button
- Foot control element 2 joysticks plus activation switch
- Optional pushing aid drive (e-Drive)

### Battery unit

- Power supply-independent battery unit with 2 batteries (lead-gel), pollution free, maintenance-free, cadmium-free
- Quick-exchange battery drawer replaceable without tools
- Universal battery charger Input: 100-240 V, Output: 24 V

### Operating Time Per Battery Charge

- Measured by operating circle (Prepare-Operate-Recover) 100Ps
- Quantity of operating circles depends on individual operation

### Electromotive Drives

- Head, back, seat, foot, total up/down
- Trendelenburg/Reverse Trendelenburg

### Hand control

- Memory controller with 10 buttons for head-, back-, seat-, leg – total up/down; 2 buttons for wheel direction control, 1 button for electronic brake, 1 easy entry button, memory button, on-off button, auto-run function
- 5 programmable presets
- Visual battery level indicator

### Max. Load

250 kg

### Weight

165 kg

*Subject to technical modifications.*

# 500 XLE

*The perfect reclining treatment chair  
for rotation systems in outpatient  
operating rooms.*



Order No. 15000006

## ADVANTAGES



- Optimized price-performance ratio
- Ample legroom and unobstructed access to the patient's head
- Space-saving design for flexible use, outstanding maneuverability even in the most confined of spaces
- Multi-functional manual keypad with 4 memory positions and auto-run function
- Automatic switch-off, reactivation button at foot keypad
- Sterile working conditions without interruption thanks to adjustment functions provided by the foot keypad
- Not location-bound thanks to battery operation



- Easy maneuverability thanks to mechanic guidance operated via braking lever
- 360-degree rotating, electrically conductive double casters for outstanding movement characteristics
- Stool & table combination – no need for shifting or relocating the patients
- Service-friendly access for easy cleaning and maintenance
- User-friendly



- Easy mounting and dismounting, low access height
- Comfortable armrests for high patient safety, removable
- Comfortable upholstery in anthracite F6461197 standard shade
- Ergonomic patient positioning







Power supply-independent battery box with integrated emergency stop button.



Removable foot switch with infinite electronic height and head adjustment including reactivation button.



Standard sculptured headrest for high-precision patient positioning, adjustable via manual switches or foot switches.



2 mechanically operated braking levers with steering guide function.



Comfortable armrests for high patient safety, removable.



Electrically conductive double casters for secure positioning and perfect handling characteristics.

## EQUIPMENT



Detachable push handles.

360-degree rotating double casters with full lock and "Steering Guide" function.

Folding-down armrests for simple entry and exit.

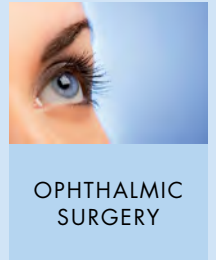
Ample legroom for the surgeon – for optimized access to the patient.



Multi-functional manual keypad with positions memory and auto-run function.  
Optional: Hand control holder  
**Order No.: 33510027**

# 500 XLE comfort

*The reclining treatment chair designed for a particularly high level of comfort and two-tone design.*



Order No. 15000006 + 30370080

## ADVANTAGES



- Thicker comfort upholstery well suited for longer surgical procedures (e.g. retina surgery)
- Optimized price-performance ratio
- Ample legroom and unobstructed access to the patient's head
- Space-saving design for flexible use, outstanding maneuverability even in the most confined of spaces
- Multi-functional manual keypad with 4 memory positions and auto-run function
- Automatic switch-off with reactivation button at foot keypad
- Sterile working conditions without interruption thanks to adjustment functions provided by the foot keypad
- Not location-bound thanks to battery operation



- Easy maneuverability thanks to mechanic guidance operated via foot switch
- 360-degree rotating, electrically conductive double casters for outstanding movement characteristics
- Stool & table combination – no need for shifting or relocating the patients
- Service-friendly access for easy cleaning and maintenance
- User-friendly



- Easy mounting and dismounting, low access height
- Comfortable armrests for high patient safety, removable
- Patient-friendly comfort upholstery including integrated knee support cushion in a two-tone design





Memory manual switch with four freely storable memory positions and auto-run function.



Integrated knee support cushion, individually positionable to suit every patient's body height.



Two-tone comfort upholstery for even more comfortable sitting/reclining positions.



Zinc-primed chassis with anthracite structured finish. Scratch-resistant, hard-wearing, ABS covering in white.



Detachable push handles on the foot ends for easy maneuvering.



Telescopic stainless-steel accessories storage system.

## EQUIPMENT



Thicker comfort upholstery and integrated knee support cushion, individually positionable to suit every patient's body height.

Order No.: 30370080

Detachable push handles on the foot end.

Two-tone comfort upholstery (anthracite F6461197 / chrome F6461205 standard shade) for even more comfortable sitting/reclining positions.  
Order No. 30370092



Available in a wide variety of colors. Please refer to Page 68 for our complete range of colors.



# 500 XLE *comfort*

## 500 XLE

### PREMIUM ACCESSORIES

- Foot part extension
- Removable back part sliding handles
- Side parts incl. quick-release clamp



OPHTHALMIC  
SURGERY



Removeable back part sliding  
handles

Order No.: 33510046



Foot part extension incl. foot  
support for lower patient access  
height

Order No.: 33510049



Removeable back part  
sliding handles

Order No.: 33510046

Side parts  
(right + left)

Order No.: 33510050







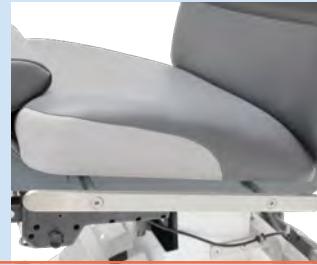
Adjustable foot part extension incl. foot support for easier mounting and dismounting of the patient.



Different positions of the foot part extension.



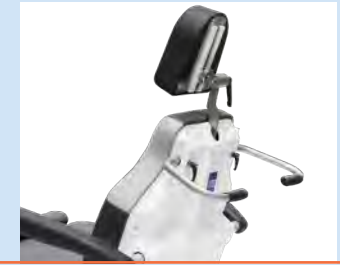
Side parts right and left prevents lateral slipping of the patient.



Norm rail for seat part for mounting accessories.



Back part sliding handles for maneuvering in lying position.



Back part sliding handles for maneuvering in sitting position.

Side parts (right + left) for mounting on norm rail (Order No.: 33510047), longitudinally adjustable  
Order No.: 33510050



Foot part extension incl. foot support  
Order No: 33510049  
For easier mounting and dismounting of the patient  
The foot part is extendable up to 190 mm.



Removable back part sliding handles, adjustable in different positions.  
Order No.: 33510046

# 500 XLE & 500 XLE *comfort*

## ACCESSORIES



PADDED ARM BOARD  
with universal joint, with wrist  
secure straps  
Order No. 33510011



BACKUP BATTERY  
Order No. 30470000



SIDE PARTS  
(right + left) swiveling incl.  
locking, upholstered  
Order No. 33510012



SIDE PARTS  
(right + left) incl. quick-re-  
lease clamp for mounting on  
norm rail (without norm rail  
33510047) 580x200mm  
Order No. 33510050



FLEXIBLE SURGICAL DRAPE  
SUPPORT ROD  
with oxygen connection  
Order No. 32060000



FLEXIBLE SURGICAL DRAPE  
SUPPORT ROD  
without oxygen connection  
Order No. 32050000



WRIST REST  
incl. mounting plate  
30130000, adjustable  
Order No. 30140000



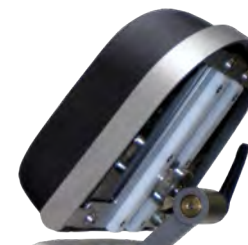
WRIST REST  
incl. mounting plate  
30130000, adjustable, tiltable  
Order No. 30140005



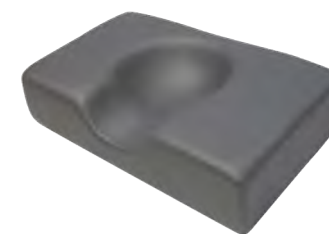
HAND CONTROL HOLDER  
PVC  
Order No. 33510027



HAND CONTROL HOLDER  
for attachment onto an I.V.  
Pole  $\varnothing$  25/18 mm, PVC  
Order No. 33510036



HEAD PART BUMPER  
stainless steel  
Order No. 30280000



HEAD FIXYTION PILLOW  
with hollow (rubins pillow), 41  
x 25 cm, height: 10 cm  
Order No. 30220000

# 500 XLE & 500 XLE comfort

## ACCESSORIES



I.V. POLE stainless steel  
ø 25/18 mm, one-hand height-  
adjustable 1070–1660 mm, 4  
hooks, max. 2 kg 84.4lbs/hook,  
glass and holder  
Order No. 30680000



MONITOR ARM  
stainless steel, swiveling, incl.  
extendible I.V. Pole ø 25 mm  
Order No. 30240014



ACCESSORY MOUNTING  
SUPPORT  
stainless steel  
Order No. 33510037



SLIDING HANDLES  
back part  
Order No. 33510046



ADDITIONAL HANDLES  
pair  
Order No. 33510017



FOOT PART EXTENSION  
incl. foot support  
retrofit kit  
Order No. 33510048  
factory-fitted, upcharge  
Order No. 33510049



FOOT PROTECTION FOIL  
Order No. 30920001



OXYGEN CYLINDER HOLDER  
Order No. 30720002



NORM RAIL  
seat part  
Order No. 33510047



MOUNTING PLATE  
stainless steel for the wrist rest  
30140000  
Order No. 30130000



INSTRUMENT TABLE  
50 x 30 x 1.5 cm, height-ad-  
justable, swiveling, detachable,  
incl. adapter  
Order No. 30650000



SHOULDER PARTS  
right and left  
500 XLE  
Order No. 30710000  
500 XLE comfort  
Order No. 30710001



# **500 XLE & 500 XLE comfort**

## **REFERENCES**



**CLINIQUE JULES VERNES**  
NANTES, FR



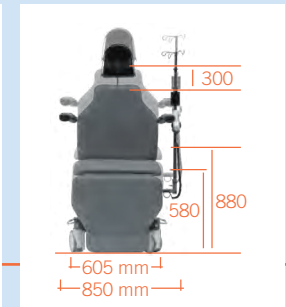
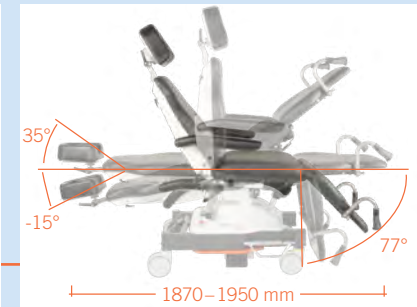
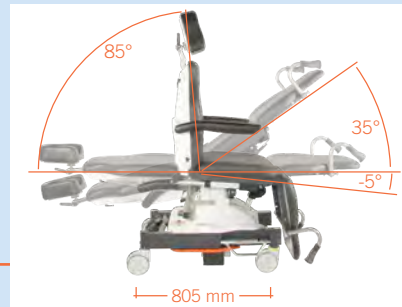
**AUGENKLINIK HERZOG CARL THEODOR**  
MÜNCHEN, DE

FURTHER REFERENCES: [UFSK-OSYS.COM/REFERENCES](https://www.ufsk-osys.com/references)



# 500 XLE

## 500 XLE comfort



## SPECIFICATIONS

### Chassis

- Frame profile 90 x 50 mm
- Outside length 805 mm
- Outside width 605 mm
- Width incl. armrest 850 mm
- Zinc undercoat, elegant anthracite matte finish
- Brake operable from both sides and acting on two (2) wheels each; 2 wheels featuring independent directional wheel positioning
- Double rimmed casters ø 125 mm
- Detachable foot keypad (total up/down, head up/down)
- Emergency stop button
- Visible screws are stainless steel
- With equipotential bonding connection

### Lifting Column

- Max. lifting force 300 mm
- Max. patient weight 250 kg
- Motors IPX4 with HAL sensoric, to be memorized

### Upper Frame

- 4-part support frame (head, back, seat, foot)
- Length 1,870–1,950 mm
- Width 610 mm

- Access height 580 mm
- Removeable upholstery
- Tundra skai colors see color chart

	Max. Load	Angle	Dimensions (l x w)
- Head part	20 kg	-15°/+35°	300 x 250 mm
- Back part	90 kg	0°/+85°	610 x 610 mm
- Seat part	90 kg	-5°/+35°	450 x 610 mm
- Leg part	50 kg	0°/+77°	510 x 610 mm
- Trendelenburg		-12°	
- Height adjustment	250 kg		from 580–880 mm
- Armrests	30 kg ea.	0°/+180°	(2 x) 470 x 75 mm

### Electronic Control

- All components according to IPX4
- Manual keypad with 4 individually programmable memory positions, auto-run function, reset button
- Foot keypad with 4 foot switches and reactivation button

### Battery unit

- Battery box with 2 batteries (lead-gel), pollution free, maintenance-free, cadmium-free 2 x 12 V 7.2 Ah
- As back-up-system exchangeable without tools

- Acoustic low voltage signal for discharge protection
- Universal battery charger Input: 100-240 V, Output: 24 V

### Operating Time Per Battery Charge

- Measured by operating circle (Prepare-Operate-Recover) 100 OPs
- Quantity of operating circles depends on individual operation

### Electromotive Drives

- Head, back, seat, foot, total up/down
- Trendelenburg/Reverse Trendelenburg

### Further Technical Details

- Chair has detachable, swiveling armrests made completely with PU foam
- Detachable seat for service friendly access to electric components

Max. Load 250 kg

Weight 135 kg

Subject to technical modifications.

# 500 XLS

*Developed for maximum stability.*



ORAL &  
MAXILLOFACIAL



AESTHETIC  
SURGERY



IVOM  
TREATMENTS

Order No. 15000005

## ADVANTAGES



- Versatile design to support a wide range of applications: OMF surgery, dental surgery, ophthalmic surgery and IVOM treatments (intravitreal operative drug applications)
- Outstanding price-performance ratio
- Multi-functional headrest element featuring two-dimensional and longitudinal adjustment
- Manual keypad with 4 memory positions, auto-run function, and reset key
- Removable foot keypad for backrest, seat and height adjustment, including on-off switch, 3 memory positions, and a reset key
- Power supply-independent battery box with integrated emergency shut-down switch
- 4 powerful drives for adjusting the backrest, footrest and seat elements as well as the overall height



- Mono lifting column designed for a maximum patient weight of up to 200 kilograms
- Rugged moving gear featuring 2 centrally braking steering casters and 2 rigid wheels for high stability combined with easy maneuverability
- Convenient push handles and smooth-moving casters



- Comfortable upholstery in anthracite F6461197 standard shade
- Easy mounting and dismounting
- Comfortable armrests, removable
- Low access height

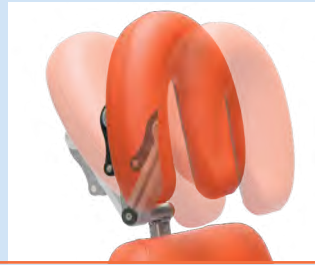




Power supply-independent battery box with integrated emergency stop button



Removable foot keypad for backrest, seat and height adjustment, including on-off button, 3 memory positions, and a reset key.



Multi-functional headrest element featuring two-dimensional and longitudinal adjustment.



Multi-functional manual keypad with four freely storable memory positions, auto-run function, on-off switch, and reset key.



Push handles on the foot end for easy maneuvering.



2 centrally braking steering casters.

## EQUIPMENT



Optional: Manual keypad holding bracket.

**Order No. 33230000**

Servo-motor powered operation via hand and foot keypad.

Optional: Norm rail for the back- /seatrest element.

**Order No. 33200000 / 33210000**

Stainless-steel accessory support system.

Stationary yet mobile.



Removable multifunctional foot keypad.

# 500 XLS

## ACCESSORIES



**PADDED ARM BOARD**  
with universal joint, with wrist  
secure straps  
Order No. 30780000



**BACKUP BATTERY**  
Order No. 30470000



**SIDE PARTS**  
(right + left) swiveling incl.  
locking, upholstered  
Order No. 31010001



**FLEXIBLE SURGICAL DRAPE  
SUPPORT ROD**  
incl. norm rail and mounting  
clamp  
with oxygen connection  
Order No. 33510009



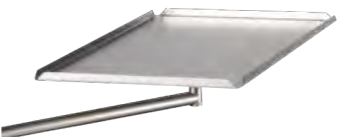
**FLEXIBLE SURGICAL DRAPE  
SUPPORT ROD**  
incl. norm rail and mounting  
clamp  
without oxygen connection  
Order No. 33510010



**MONITOR ARM**  
stainless steel, swiveling, incl.  
extendible I.V. Pole  $\varnothing$  25 mm  
Order No. 30240014



**ACCESORY MOUNTING  
SUPPORT**  
stainless steel  
Order No. 33510037



**INSTRUMENT TABLE**  
50 x 30 x 1.5 cm, height-ad-  
justable, swiveling, detachable,  
incl. adapter  
Order No. 30650000



**FOOT PROTECTION FOIL**  
Order No. 33260000



**INLAY HEAD PILLOW**  
Order No. 33250000



**TRAPEZE CUSHION**  
wedge, for back/seat part  
Order No. 30220005



**ADDITIONAL HANDLES**  
pair  
Order No. 30690000



# 500 XLS

## ACCESSORIES



HAND REMOTE BRACKET  
Order No. 33230000



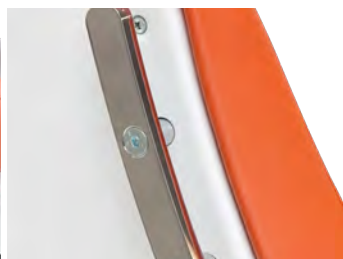
HAND CONTROL HOLDER  
for attachment onto I.V. Pole  
Order No. 33220000



I.V. POLE stainless steel  
ø 25/18 mm, one-hand height-  
adjustable 1070–1660 mm, 4  
hooks, max. 2 kg 84.4lbs/hook,  
glass and holder  
Order No. 30680000



NORM RAIL  
300 mm, seat part  
Order No. 33210000



NORM RAIL  
back part  
Order No. 33200000

## stayClean

Practical single-use cover drape.



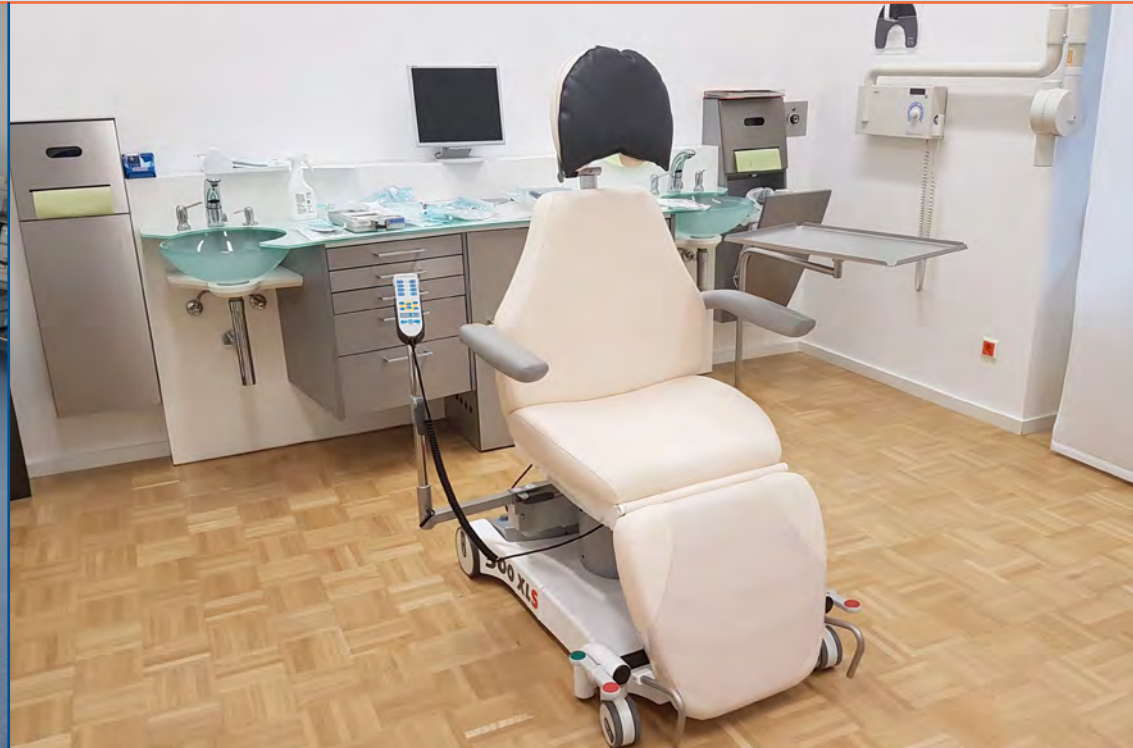
Order No. 30340014

# 500 XLS

## REFERENCES



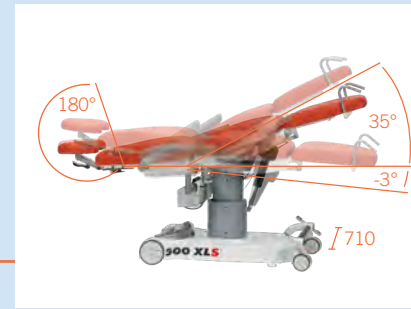
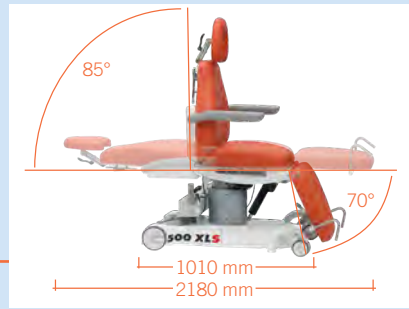
**DR. MED. MARKUS PFEIFFER**  
MÜNCHEN, DE



**KRANKENHAUS ST. JOSEF**  
BRAUNAU, AT

FURTHER REFERENCES: [UFSK-OSYS.COM/REFERENCES](http://UFSK-OSYS.COM/REFERENCES)

# 500 XLS



## SPECIFICATIONS

### Chassis

- Frame profile 60 x 30 mm
- Outside length 1,010 mm
- Outside width 710 mm
- Width incl. armrest 830 mm
- White paint finish
- Central brake, operable from both sides
- 2 ea. double casters ø 100 mm
- 2 ea. rigid casters ø 150 mm
- Foot keypad, removable (for overall adjustment, backrest adjustment, up/down seat adjustment; reset button; auto-run function; 3 memory positions)
- Emergency stop button
- With equipotential bonding connection

### Lifting Column

- Max. lifting force 280 mm
- Max. patient weight 200 kg
- Motors IPX4 with HAL sensoric, to be memorized

### Upper Frame

- 4-part support frame (head, back, seat, foot)
- Length 1,930–2,180 mm

- Width 610 mm
- Access height 580 mm
- Removeable upholstery
- Tundra skai colors see color chart

	Max. Load	Angle	Dimensions (l x w)
- Head part	10 kg	0°/+180°	275 x 275 mm
- Back part	80 kg	0°/+85°	610 x 610 mm
- Seat part	75 kg	-3°/+35°	510 x 605 mm
- Leg part	35 kg	0°/+70°	490 x 525 mm
- Height adjustment	200 kg		from 580-860 mm
- Armrests	30 kg ea.	0°/+180°	455 x 75 mm

### Electronic Control

- All components according to IPX4
- Manual keypad with 4 individually programmable memory positions, auto-run function, reset button
- Foot keypad

### Battery unit

- Battery box with 2 batteries (lead-gel), pollution free, maintenance-free, cadmium-free 2 x 12 V 7.2 Ah
- As back-up-system exchangeable without tools

- Acoustic low voltage signal for discharge protection
- Universal battery charger Input: 100-240 V, Output: 24 V

### Operating Time Per Battery Charge

- Measured by operating circle (Prepare-Operate-Recover) 100 OPs
- Quantity of operating circles depends on individual operation

### Electromotive Drives

- Back, seat, foot, total up/down
- Trendelenburg/Reverse Trendelenburg

### Further Technical Details

- Chair has detachable, swiveling armrests made completely with PU foam
- Detachable seat for service friendly access to electric components

Max. Load 200 kg

Weight 100 kg

Subject to technical modifications.

# 500 bariatric

Outpatient surgery in XXL format.



Order No. 15000002

## ADVANTAGES



- Rugged steel frame and highly resilient steel chassis
- Ideal proximity to the patients
- Three individually storable memory positions
- Power supply-independent battery box with integrated emergency stop button
- Optimum price-performance ratio
- Supports on the left and right for holding an extensive range of accessories
- With equipotential bonding connection



- Excellent movement characteristics thanks to double casters, 360° rotating
- Push handles on the head and foot ends
- High-grade, anti-microbial and seamless deep-drawn upholstery fabric
- Convenient maneuvering by a single person thanks to steering guide
- Two manual brake levers acting on 2 wheels each
- Easy maintenance and service



- 760 mm wide, sturdy covering for maximum comfort, anthracite 197 standard shade
- Smooth, rapid and direct approaching of the various positions and the adjustable sculptured headrest for high-precision patient positioning (even for patients suffering from Bechterew's disease)
- Comfortable armrests for high patient safety, removable
- Mono lifting column designed for a maximum patient weight of up to 350 kg







Mechanic "Steering Guide" on the head and foot ends, operated via brake lever. Brake lever acting on 2 wheels each.



Removable foot keypad for infinite electronic height and head adjustment.



Patient-friendly and back-protecting patient shifting – with infinite adjustment from sitting to reclining position.



Manual keypad with 3 freely programmable memory positions and reset button.



Rugged heavy-duty chassis, 150 mm ø casters, lockable in the direction indicated by the "Steering Guide".



760 mm wide upholstery.

## EQUIPMENT



Extra-wide and sturdy covering.

Mono-lifting column designed for a maximum patient weight of 350 kilograms.

Rugged steel frame and highly resilient steel chassis.



Available in a wide variety of colors. Please refer to Page 68 for our complete range of colors.





# FUNCTIONAL.

ENJOY QUALITY AND DESIGN.

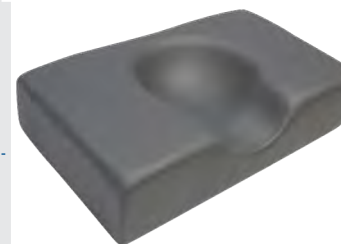


# 500 bariatric

## ACCESSORIES



WRIST REST  
incl. mounting plate,  
adjustable  
Order No. 30140000  
adjustable, tiltable  
Order No. 30140005



HEAD FIXATION PILLOW  
with hollow (rubins pillow),  
41 x 25 cm, height: 10 cm  
Order No. 30220000



PADDED ARM BOARD  
with universal joint, with wrist  
secure straps  
Order No. 30780000



BACKUP BATTERY  
Order No. 30470000



SIDE PARTS  
(right + left) swiveling incl.  
locking, upholstered  
Order No. 31010001



FLEXIBLE SURGICAL DRAPE  
SUPPORT ROD  
with oxygen connection  
Art.-Nr. 32060000  
without oxygen connection  
Order No. 32050000



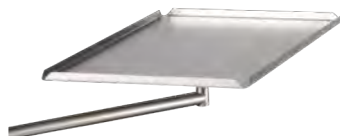
MONITOR ARM  
stainless steel, swiveling, incl.  
extendible I.V. Pole ø 25 mm  
Order No. 30240014



ACCESSORY MOUNTING  
SUPPORT  
stainless steel  
Order No. 33510037



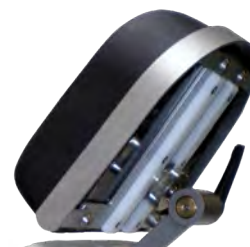
I.V. POLE stainless steel  
ø 25/18 mm, one-hand height-  
adjustable 1070–1660 mm, 4  
hooks, max. 2 kg 84.4lbs/hook,  
glass and holder  
No. 30680000



INSTRUMENT TABLE  
50 x 30 x 1.5 cm, height-ad-  
justable, swiveling, detachable,  
incl. adapter  
Order No. 30650000



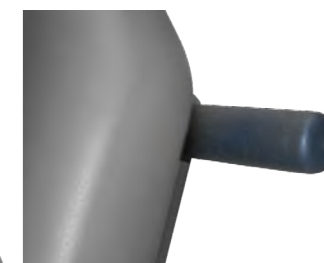
OXYGEN CYLINDER HOLDER  
Order No. 30720000



HEAD PART BUMPER  
stainless steel  
Order No. 30280000



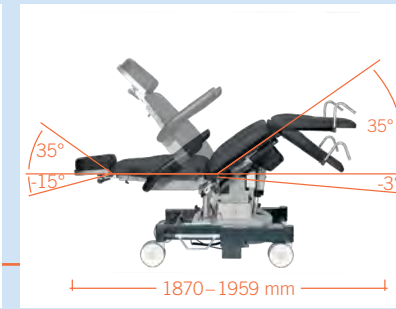
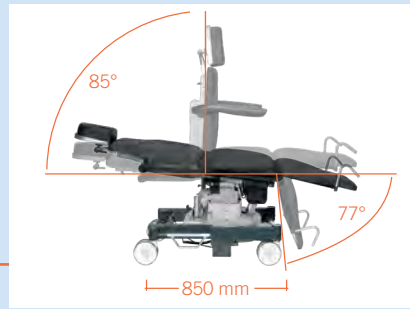
SHOULDER PARTS  
right and left  
Order No. 30710000



ADDITIONAL HANDLES  
pair  
Order No. 30690000



# 500 bariatric



## SPECIFICATIONS

### Chassis

- Frame profile 90 x 50 mm
- Zinc-plated and powder-coated according to RAL
- Central brake on both sides works on 2 wheels each. The direction of two wheels can be independently adjusted
- Double rimmed casters ø 150 mm
- Detachable foot keypad (total up/down, head up/down)
- Emergency stop button
- Visible screws are stainless steel

### Lifting Column

- Max. lifting force 260 mm
- Max. patient weight 350 kg
- Motors IPX4

### Upper Frame

- 4-part support frame (head, back, seat, foot)
- Length 1,870–1,959 mm
- Width 760 mm
- Width incl. armrest 985 mm
- Access height 650 mm
- Removeable upholstery
- Tundra skai colors see color chart

	Max. Load	Angle	Dimensions (l x w)
- Head part	30 kg	-15°/+35°	300 x 250 mm
- Back part	125 kg	0°/+85°	610 x 760 mm
- Seat part	125 kg	-3°/+35°	450 x 760 mm
- Leg part	70 kg	0°/+77°	510 x 760 mm
- Height adjustment	350 kg		from 650–910 mm
- Armrests	30 kg ea.	0°/+180°	(2 x) 470 x 75 mm

### Electronic Control

- All components according to IPX4
- Manual keypad with 3 individually programmable memory positions and reset button
- Foot keypad with 4 foot switches

### Battery unit

- Battery box with 2 batteries (lead-gel), pollution free, maintenance-free, cadmium-free 2 x 12 V 7.2 Ah
- As back-up-system exchangeable without tools
- Acoustic low voltage signal for discharge protection
- Universal battery charger Input: 100-240 V, Output: 24 V

### Operating Time Per Battery Charge

- Measured by operating circle (Prepare-Operate-Recover) 80 OPs
- Quantity of operating circles depends on individual operation

### Electromotive Drives

- Head, back, seat, foot, total up/down
- Trendelenburg/Reverse Trendelenburg

### Further technical details

- Chair has detachable, swiveling armrests made completely with PU foam
- All touchable metal parts are grounded
- Detachable seat for service friendly access to electric components

Max. Load 350 kg

Weight 145 kg

Subject to technical modifications.

# surgiForce

*The ultimate surgeon's chair for microsurgery.*



MICRO  
SURGERY



OPHTHALMIC  
SURGERY

Order No. 26000000

## ADVANTAGES



### Armrests

- Allows personalized adjustment of the armrest elements under sterile conditions even while performing surgical procedures - simply via the foot keypad and the single-handed activation

### Seating system

- Our unique dynamic seating system supports correct sitting postures while protecting your back
- The seat surface and seat depth can be individually adjusted to suit every surgeon's physique with the aid of a sliding carrier plate (located underneath the seat).
- Moving the seat allows individualized ergonomic adjustment of the surgical area and ensures that the patient is sufficiently close to the attending physician
- Seat height adjustment is also effected electronically, via the foot switches

### Chassis

- The cast-aluminum lightweight chassis featuring double casters and a central brake provides maximum stability and at the same time unlimited mobility
- The materials and workmanship satisfy the most stringent hygienic requirements
- Battery operation for power supply-independent use
- Foot control element for seat height and armrest height adjustment; acoustic signal tone signaling the switch-over from armrest height to seat height adjustment
- Added stability thanks to a 5th wheel



## EQUIPMENT



Central brake acting on 4 wheels.



Both seat height adjustment and armrest height adjustment are effected electronically via the foot control element.



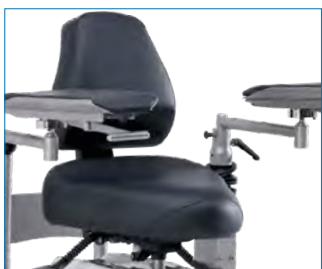
Ergonomically shaped push handles for easy maneuvering.



The individually adjustable armrests can be adjusted under sterile conditions via the foot keypad and the one-hand release.



"Dynamic"® seating system: our unique dynamic seating system supports correct sitting posture while protecting your back.



Optional: surgiForce with Combi Seat.

Order No. 26000001

Individual stool adjustment.

The optionally adaptable foot switch plate ensures the optimized layout of your foot control elements even during alternating uses, thus obviating the need for time-consuming repositioning maneuvers. Order No. 33170000



Exemplary application with foot switch plate.

## SPECIFICATIONS

### Lifting Column

- Lifting height of the seat 200 mm
- Lifting height of the armrests 135 mm
- Electromotive adjustment via the foot control elements

### Chassis

- w x l x h max. (incl. armrest) 742 x 861 x 943 mm
- Wheels ø 100 mm
- 5. Wheel ø 60 mm
- Central brake acting on all four wheels
- Emergency stop button

### Battery unit

- Lead-gel battery, 2 ea. 12 V, 2.9 A
- Universal battery charger:
- Input: 100-240 V
- Output: 24 V

### Seat/backrest

- Min. sitting height 640 mm
- Max. sitting height 840 mm
- Seat/Back adjusting -6°/+3°

### Weight

74 kg

### Max Load

150 kg

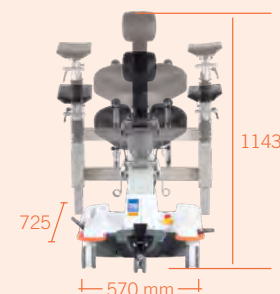
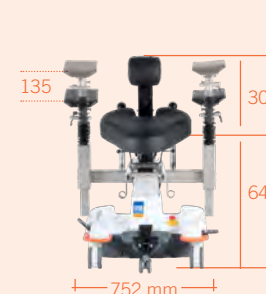
### Upholstery colors

Stamskin top

### Standard color

black

Subject to technical modifications.





Order No. 22000010

## ADVANTAGES



### Armrests

- Rugged, 360-degree movable, and height-adjustable

### Seat System

- Our unique dynamic seating system supports correct sitting postures while protecting your back

### Chassis

- 4 double casters
- 5th wheel for added resistance to tipping
- Central brake acting on 4 wheels
- Power supply-independent battery box with integrated emergency stop button
- Foot keypad panel for moving the seat up & down

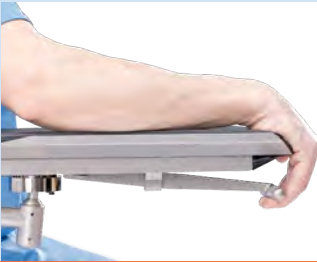




# EQUIPMENT



"Dynamic"<sup>®</sup> seating system: the dynamically synchronized lumbar-support seating mechanism can be individually adjusted to every user, thus promoting healthy seating behavior. During frequent switching between sitting and standing work positions, every change of position is actively supported.



Optional: one-hand height release for direct and high-precision all-around adjustment.  
**No. 33100000**



Central braking system effective on 4 wheels.



Foot keypad panel-operated electro-motive drives for height adjustment.



Optional: *surgiTrend* with Comfort seat with individual seat and back part adjustment.

**Order No. 22000012**



Standard equipment:  
Armrest 360-degree movable, height and longitudinally adjustable, 350 x 120 mm.

Optional special accessories:  
Adaptable foot-switch plate for your control elements on 5 casters.  
Adjust the foot switches to best suit your individual position. Useful, convenient, and time-saving.  
**Order No. 31050003**

## SPECIFICATIONS

### Lifting Column

- Drive 3,000 N IPX4
- Lifting height 200 mm

### Chassis

- w x l 470 x 535 mm
- Wheels ø 100 mm
- 5. Wheel ø 65 mm
- Central brake acting on all four wheels
- Emergency stop button

Weight 45 kg

Max Load 150 kg

### Battery unit

- Battery box with 2 batteries

(lead-gel), pollution free, maintenance-free, cadmium-free  
2 x 12 V 7.2 Ah

- Universal battery charger:  
Input: 100-240 V  
Output: 24 V

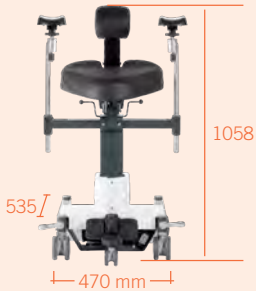
### Seat/backrest

- Min. sitting height 553 mm
- Max. sitting height 753 mm
- Seat/Back adjusting -6°/+3°

Upholstery colors Stamskin top

Standard color black

*Subject to technical modifications.*





Order No. 22000008

## ADVANTAGES



### Armrests

- Rugged, 360-degree movable, and height-adjustable
- Designed for personalized adjustment to the surgeon

### Seat System

- Seat system evenly distributes your weight as you make the slightest adjustment in position.
- Anatomically formed, ergonomic backrest reduces pressure on inter vertebral discs and provides ideal support for the lumbar spine.
- Seat system upholstery in standard color anthracite F6461197
- Outstanding sitting comfort

### Chassis

- 4 double casters
- Central brake acting on 4 wheels
- Power supply-independent battery box with integrated emergency stop button
- Foot keypad for moving the seat up & down
- Extremely easy to move
- Space-saving



## EQUIPMENT



Completely height and lengthwise adjustable arm-rests, 350 x 120 mm.



Optional: one-hand height release for direct and high-precision all-around adjustment.

No. 33100000



Adjustable backrest.



Tiltable seat.



Foot keypad enables quick and easy electromotive height adjustment.



Seat system evenly distributes your weight as you make the slightest adjustment in position.

Anatomically formed, ergonomic backrest reduces pressure on intervertebral discs and provides ideal support for the lumbar spine.



Optional: adaptable foot switch plate.

Order No. 33510014

## SPECIFICATIONS

### Lifting Column

- Drive 3,000 N IPX4
- Lifting height 200 mm

### Chassis

- w x l 470 x 535 mm
- Wheels ø 100 mm
- Central brake acting on all four wheels
- Emergency stop button

Weight 45 kg

Max Load 150 kg

### Battery unit

- Battery box with 2 batteries (lead-gel), pollution free,

maintenance-free, cadmium-free

2 x 12 V 7.2 Ah

- Universal battery charger:

Input: 100-240 V

Output: 24 V

### Seat/backrest

- Min. sitting height 535 mm

- Max. sitting height 735 mm

- Seat adjusting +6°/-9°

- Back adjusting +4°/-18°

Upholstery colors Tundra skai

Standard color anthracite

F6461197

Subject to technical modifications.



# assistTrend

The ergonomic assistant's stool.



OPHTHALMIC  
SURGERY



AESTHETIC  
SURGERY



DENTAL  
SURGERY



ENT  
SURGERY



MICRO  
SURGERY



ORAL &  
MAXILLOFACIAL

Order No. 25000002

## ADVANTAGES



- Our unique dynamic seating system supports correct sitting postures while protecting your back
- High-grade, comfortable and easy-care upholstery fabric to meet even the most stringent hygiene requirements
- Seat and backrest upholstery in standard color black
- Upholstery optionally available in a wide variety of colors
- Excellent movement characteristics thanks to double castors and 5-arm aluminum chassis
- Sterile, comfortable height adjustment via foot-triggered gas pressure spring
- Flexible height adjustment from 57 to 77 centimeters
- Reduces muscular tension in the neck and lumbar areas caused by work-related, prolonged sitting.
- Supports maximum loads up to 130 kilograms



Comfortable height adjustment  
via foot triggering.



Optional: assistTrend with armrests.

No. 33000000



## SPECIFICATIONS

<b>Chassis</b>		<b>Max. Load</b>	130 kg
- Five legged chassis	ø 585 mm		
- Wheels	ø 65 mm		
<b>Lifting Column</b>		<b>Seat/backrest</b>	
- Height adjustment	57–77 cm	- Seat/Back adjusting	-6°/+3°
- For body height of 1.75 m–1.95 m		<b>Upholstery</b>	Stamskin top
		<b>Standard color</b>	black
<b>Weight</b>	7,5 kg	Subject to technical modifications.	







OPHTHALMIC  
SURGERY



AESTHETIC  
SURGERY



DENTAL  
SURGERY



ENT  
SURGERY



MICRO  
SURGERY



ORAL &  
MAXILLOFACIAL

Order No. 24000015

## ADVANTAGES



- Rugged safety chassis with 5-arm aluminum pedestal
- Double casters for extremely smooth movement
- Height adjustment via manually triggered gas pressure spring
- Flexible height adjustment from 54.5 to 73.5 centimeters
- Rotating and tilting anatomically correct saddle seat, comfortable and individually adjustable
- Maximum comfort level for your assistants, to prevent pain and fatigue while supporting the blood circulation
- High-quality, comfortable and easy-care upholstery to meet even the most stringent demands and hygiene requirements
- Seat upholstery in standard color anthracite (Color chart Tundra skai)
- Upholstery optionally available in a wide variety of colors
- Supports maximum loads up to 130 kilograms



Manual gas pressure spring  
adjustment.



## SPECIFICATIONS

### Lifting Column

- Hand operated 190 mm
- Height adjustment 54.5-73.5 cm

### Chassis

- Five legged chassis ø 585 mm
- Wheels ø 65 mm

### Weight

Saddle seat 35 x 42.5 x 18 cm 7,5 kg

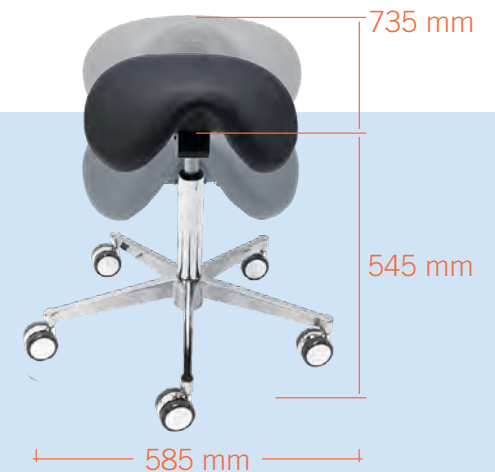
### Seat

- Seat adjusting +2°/+16°

### Upholstery

- Tundra skai
- Standard color anthracite

Subject to technical modifications.



# assistPro

The perfect assistant's stool.



OPHTHALMIC  
SURGERY



AESTHETIC  
SURGERY



DENTAL  
SURGERY



ENT  
SURGERY



MICRO  
SURGERY



ORAL &  
MAXILLOFACIAL

Order No. 24000005 & 24000009

## ADVANTAGES



- Ergonomically shaped seat and backrest
- The upholstery fabric is easy to clean, resistant to blood, perspiration and saliva, non-fade, and flame-retardant
- Excellent movement characteristics thanks to double castors and 5-arm aluminum chassis
- Sterile, comfortable height adjustment via **foot-triggered** gas pressure spring for the **assistPro F**. The height of **assistPro H** is adjusted **manually**, via the levers underneath the seat.
- Flexible height adjustment from 52 to 71.5 centimeters
- Reduces muscular tension in the neck and lumbar areas caused by work-related, prolonged sitting.
- Supports maximum loads up to 130 kilograms
- Upholstery in standard color black (Color chart Periline)

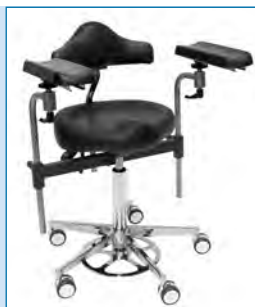
### assistPro F

Order No. 24000005



### assistPro H

Order No. 24000009



*Optional:  
assistPro F with arm rests  
Rugged armrests, 360-de-  
gree movable and  
height-adjustable  
Order No.: 33510038*



*Optional:  
Electrically conductive  
upholstery in color black  
Order No.: 30370223*

## SPECIFICATIONS

### Chassis

- Five legged chassis ø 585 mm
- Wheels ø 65 mm

### Weight

- assistPro F 12 kg
- assistPro H 11 kg

### Lifting Column

- Height adjustment 52–71.5 cm

### Seat/backrest

- Seat adjusting +6°/-18°
- Back adjusting +4°/-9°
- Max. Load 130 kg
- Upholstery Periline
- Standard color black

*Subject to technical modifications.*





OPHTHALMIC  
SURGERY



AESTHETIC  
SURGERY



DENTAL  
SURGERY



ENT  
SURGERY



MICRO  
SURGERY



ORAL &  
MAXILLOFACIAL

Order No. 24000010, 24000006 & 24000013

## ADVANTAGES



- Ergonomically shaped seat
- The upholstery fabric is easy to clean, resistant to blood, perspiration and saliva, non-fade, and flame-retardant
- Excellent movement characteristics thanks to double castors and 5-arm aluminum chassis
- Comfortable height adjustment via gas pressure spring with **foot-triggering** (sterile) for the **easyPro F**, with **manual triggering** for the **easyPro H**, and with **release-ring triggering** for the **easyPro R**
- Flexible height adjustment: easyPro F and easyPro H from 50 to 70 centimeters and easyPro R from 52 to 70 centimeters
- Reduces muscular tension in the neck and lumbar areas caused by work-related, prolonged sitting.
- Supports maximum loads up to 130 kilograms
- Upholstery in standard color black (Color chart Periline)



**easyPro F**  
Order No. 24000010



**easyPro H**  
Order No. 24000006



**easyPro R**  
Order No. 24000013



*Optional:  
Upholstery available  
in a wide variety of  
colors (Color chart  
Periline page 69)*



*Optional:  
Double rimmed castor,  
65mm, with braking  
function  
Order No.: 33510040*

## SPECIFICATIONS

### Chassis

- Five legged chassis ø 585 mm
- Wheels ø 65 mm

### Weight

9 kg

### Lifting Column

- Height adjustment  
easyPro F & easyPro H 50–70 cm  
easyPro R 52–70 cm

### Seat

- Seat adjusting -12°
- Max. Load 130 kg
- Upholstery Periline
- Standard color black

*Subject to technical modifications.*



# ***surgiForce***

## **ACCESSORIES**



FOOTSWITCH PLATE  
ADAPTER  
Order No. 33170000

ARM REST PAIR  
with one-hand release for  
neurosurgery (angular),  
retrofit kit  
Order No. 33500000

# ***surgiTrend***

## **ACCESSORIES**



BACKUP BATTERY  
Order No. 30470000

FOOTSWITCH PLATE  
ADAPTER  
Order No. 31050003

# ***surgiLine***

## **ACCESSORIES**



BACKUP BATTERY  
Order No. 30470000

FOOTSWITCH PLATE  
ADAPTER  
Order No. 33510014



ARMREST WITH LINEAR  
GUIDE  
and one-hand release  
retrofit kit  
Order No. 33510023

ARMREST WITH LINEAR  
GUIDE  
and one-hand release  
factory fitted  
Order No. 33510034



ARM REST PAIR  
with one-hand release  
factory fitted  
Art.-Nr. 33100000  
retrofit kit  
Order No. 33510033

ARMREST WITH LINEAR  
GUIDE  
and one-hand release  
factory fitted  
Art.-Nr. 33510035  
retrofit kit  
Order No. 33510013



ARM REST PAIR  
with one-hand release  
factory fitted  
Art.-Nr. 33100000  
retrofit kit  
Order No. 33510033

ARMREST WITH LINEAR  
GUIDE  
and one-hand release  
factory fitted  
Art.-Nr. 33510035  
retrofit kit  
Order No. 33510013



# assistTrend

## ACCESSORIES



ARM REST PAIR  
incl. traverse  
Order No. 33000000



DOUBLE RIMMED CASTOR  
50mm, elektrically conductive  
Order No. 33510039

# assistPro F

## ACCESSORIES



ARM REST PAIR  
incl. traverse  
Order No. 33510038



ELECTRICALLY CONDUCTIVE  
UPHOLSTERY  
In color black  
Order No. 30370223

# assistPro H, easyPro, assistLine

## ACCESSORIES



DOUBLE RIMMED CASTOR  
50mm, elektrically conductive  
Order No. 33510039



DOUBLE RIMMED CASTOR  
65mm, with braking function  
Order No. 33510040



DOUBLE RIMMED CASTOR  
65mm, with braking function  
Order No. 33510040



DOUBLE RIMMED CASTOR  
50mm, elektrically conductive  
Order No. 33510039



DOUBLE RIMMED CASTOR  
65mm, with braking function  
Order No. 33510040

ELECTRICALLY CONDUCTIVE  
UPHOLSTERY  
In color black  
Order No. 30370223

# 400 XL

*Highly functional, basic hydraulic treatment table.*



OPHTHALMIC  
SURGERY

Order No. 14000001

## ADVANTAGES



- Great freedom of movement and ample legroom for optimum access to the patients
- Sturdy upper frame with standard rails and rugged steel chassis
- Trendelenburg position -13°
- Head joint with angle and height adjustment
- Smooth and solid hydraulics for headrest, backrest and footrest adjustment
- Easy to service and maintain
- Can be used in any location
- Works independently of the power supply and is not affected by fluctuations in the mains voltage



- Outstanding resistance to tipping
- Large-sized double casters for easy and trouble free maneuvering and moving by a single person, person in confined spaces
- Effortless straight running –“Steering Guide” adjustable, manually adjustable wheel via the foot switch
- Central foot brake acting on 4 wheels
- Ergonomically shaped push handles – on the foot end



- Comfortable three-piece cover surface
- Wide and comfortable upholstery in anthracite
- Low access height
- Suitable even for very large patients



# EQUIPMENT



Longitudinally-sliding stainless-steel head joint with angle and height adjustment and head pillow without cavity, with radius.



Ergonomically shaped push handles on the foot end.



Foot pedal for hydraulic adjustment of head, back, shock position and overall adjustment up/down– guaranteed to last.



The centralized braking system and directional guidance can be mechanically operated via foot pedal and acts on all 4 wheels.



25 x 10 mm standard rail for the attachment of accessories.



## SPECIFICATIONS

### Chassis

- Frame profile 50 x 50 mm
- Outside length 1,100 mm
- Outside width 700 mm
- Caster, electrically conductive ø 150 mm

### Lifting Column

- Foot hydraulic 650/1,030 mm
- Height adjustment min./max. 2,000 N
- Max. lifting force 1,500 N
- Footrest section 1,200 N
- Backrest section 500 N
- Headrest section 120 bar
- Operating pressure ca. 0.7 liter
- Hydraulic oil, DTE 10 EXCEL 32

### Upper Frame

- 3-part support frame (head, back, foot)
- Length 2,000–2,050 mm
- Width 650 mm
- Head adjustment - 25°/+ 25°
- Back adjustment - 15°/+ 55°
- Foot adjustment 0°/+ 15°
- Trendelenburg - 13
- Height adjustment range 380 mm
- Standard stainless steel side rails, both sides 25 x 10 mm
- Upholstery 80 mm

### Max.Load

175 kg

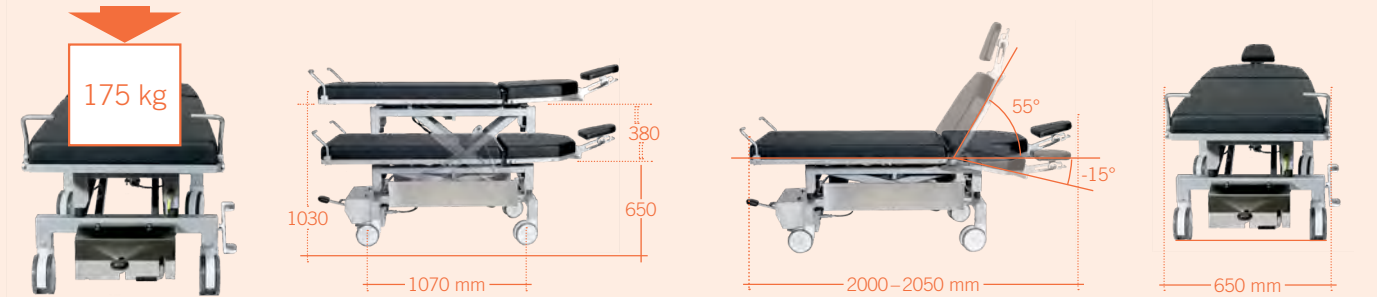
### Weight

140 kg

Subject to technical modifications.

The 400 XL treatment table can be rotated by 360 degrees to also allow lateral movements. Our entry-level model is based on a rugged and easy-to-use technology. In contrast to our electrically operated models, its function is independent of batteries. This keeps procurement costs low on the one hand and ensures a long service life on the other hand.

Please refer to page 62 for the entire range of accessories.



# 2002

*Basic, mobile treatment table with excellent all-around functionality for ophthalmology.*



Order No. 12000000

## ADVANTAGES



- Rugged, powder-coated steel chassis and sturdy upper frame
- Great freedom of movement for optimum access to the patients
- Foot switch for hydraulically powered overall up & down movements
- Trendelenburg & Reverse Trendelenburg position adjustments via the foot pedal (-18° / +13°)
- Height-adjustable head joint
- Standard rails, 25 x 10 mm, included



- Easy maneuverability thanks to manual "Steering Guide", adjustable via the foot switch
- Central brake actuated via foot switch – acting on four casters
- Continuous push handle on the foot end



- Comfortable three-piece cover surface with snug upholstery





## EQUIPMENT



Height-adjustable head joint made of powder-coated steel, with trapezoid Head pillow without cavity.



Height adjustment at the push of a foot.



Central braking system effective on all four wheels.



25 x 10 mm standard rail for the attachment of accessories.

## SPECIFICATIONS

### Chassis

- Frame profile 60 x 60 mm
- Outside length 1,140 mm
- Outside width 650 mm
- Caster, electrically conductive ø 150 mm

### Lifting Column

- Foot hydraulic
- Height adjustment min./max. 560/910 mm
- Max. lifting force 2,000 N
- Footrest section 1,500 N
- Backrest section 800 N
- Headrest section 300 N
- Operating pressure 100 bar
- Hydraulic oil, DTE 10 EXCEL 32 ca. 0.7 liter

### Upper Frame

- 3-part support frame (head, back, foot)
- Length 2,090 mm
- Width 650 mm
- Head adjustment -20°/+30°
- Back adjustment 0°/+55°
- Foot adjustment 0°/+15°
- Trendelenburg/Reverse Trendelenburg -18°/+13°
- Height adjustment range 360 mm
- Standard stainless steel side rails, both sides 25 x 10 mm
- Upholstery 40 mm

### Max.Load

150 kg

### Weight

115 kg

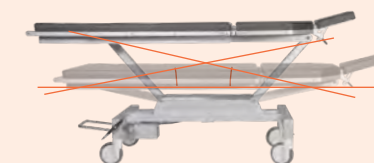
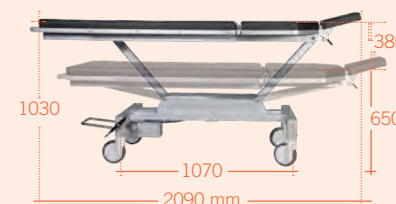
Subject to technical modifications.



Height-adjustable Head element.

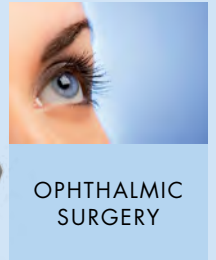
Central brake system.

Please refer to page 63 for the entire range of accessories.



# motionLine

*Uncompromising comfort for patient transport.*



Order No. 17000000

## ADVANTAGES



- Ergonomically shaped, comfortable push handles
- Integrated clip-on basket for the patients' personal effects; perfectly positioned underneath the seating surface
- High-quality, comfortable and easy-care upholstery to meet even the most stringent hygiene requirements
- Infinitely adjustable back-/footrest and seat adjustment via gas pressure spring with foot release
- Comfortable and easy maneuvering by a single person
- Two large-sized casters on the foot end and two smaller-sized double casters on the head end for effortless movement by a single person
- Two brake levers for locking the seat casters for perfect position stability
- Provides a "shock position"



- Flexible, height-adjustable neck support cushion for enhanced patient comfort
- Wide and sturdy covering for an outstanding level of comfort during reclining
- Ergonomically shaped backrest cushion with lumbar support
- Sturdy steel frame for patients weighing up to 135 kilograms
- Comfortable armrests for high patient safety, tiltable
- Low access height



## EQUIPMENT



Flexible, adaptable and sturdy – the backrest moves together with the footrest (55°) as the chair is reclined to a Trendelenburg position.



Ergonomic vertical adjustment of the chair back eliminates unnecessary sliding and rubbing. The patient can easily and comfortably lean back while experiencing complete lumbar support.

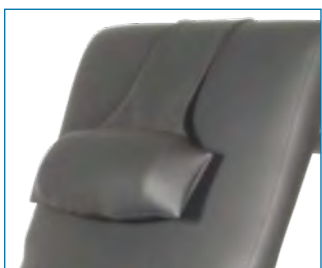


Stylish colors available for the motionLine. Standard color anthracite 197.



Ergonomically formed, durable, non-sliding rubber grips.

Comfortable, height adjustable neck support pillow as standard version.



Storage basket for patient medical records and belongings.

Please refer to page 63 for the entire range of accessories.



## SPECIFICATIONS

### Chassis

- Laser frame profile 5 mm
- Chassis length 890 mm
- Chassis width 528 mm
- Wheel diameter  $\varnothing$  300/125 mm

### Lifting Column

- 3 parts support frame
- Total length 1,710 mm
- Width 520 mm
- Upholstery Height 40/60 mm
- Back/foot adjustment 55°

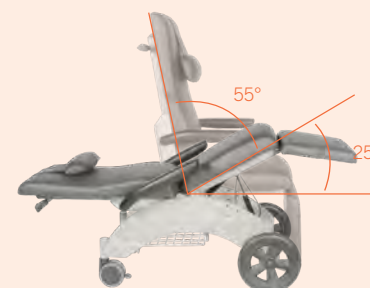
- Armrests 0°/+180°
- Seatrest adjustment to Trendelenburg position 25°

Max. Load 135 kg

Weight 56 kg

Upholstery colors Tundra skai  
Standard color anthracite  
F6461197

Subject to technical modifications.



# motionLine-E

*Uncompromising comfort for patient transport –  
with electromotive position adjustment.*



Order No. 17000001

## ADVANTAGES



- Power supply-independent battery box with integrated emergency stop button
- Ergonomically shaped, comfortable push handles
- High-quality, comfortable and easy-care upholstery to meet even the most stringent hygiene requirements
- Infinitely adjustable, electronic back-/footrest and seat adjustment - easy and convenient to operate via the manual keypad
- Convenient and easy maneuvering by a single person
- Two large-sized casters on the foot end and two smaller-sized double casters on the head end for effortless movement by a single person
- Two brake levers for locking the seat casters for perfect position stability
- Provides a “shock position”



- Flexible, height-adjustable neck support cushion for added patient comfort
- Wide and sturdy covering for an outstanding level of comfort during reclining
- Ergonomically shaped backrest cushion with lumbar support
- Sturdy steel frame for patients weighing up to 135 kilograms
- Comfortable armrests for high patient safety, tiltable
- Low access height





## EQUIPMENT



Flexible, adaptable and sturdy - the backrest moves synchronously with the footrest (55°) as the chair is electronically reclined to a recumbent position. The chair can also be adjusted to the stable "Trendelenburg" Position.



Wheel brakes on the left and right 360-degree rotating wheels hold the chair safely in place.



Flexible, height adjustable neck support pillow as standard version for enhanced patient relaxation.



Ergonomically formed, durable, non-sliding rubber grips.

Synchronized back-/footrest and seat adjustment via hand control.



High capacity, eco-friendly, independent battery box with emergency stop button.



Comfortable upholstery, anthracite F6461197 standard shade.

## SPECIFICATIONS

### Chassis

- Chassis length 890 mm
- Chassis width 528 mm
- Width incl. armrest 650 mm
- Wheel diameter ø 300/125 mm
- Emergency stop button

### Lifting Column

- 3 parts support frame
- Total length 1,710 mm
- Width 520 mm
- Upholstery Height 40/60 mm
- Back/foot adjustment 55°
- Armrests 0°/+180°
- Seatrest adjustment to Trendelenburg position 25°
- Electronic control system per keypad

- Synchronized back-/footrest and seat adjustment

### Battery unit

- Battery box with 2 batteries (lead-gel), pollution free, maintenance-free, cadmium-free

2 x 12 V 7.2 Ah

- Universal battery charger:

Input: 100-240 V, Output: 24 V

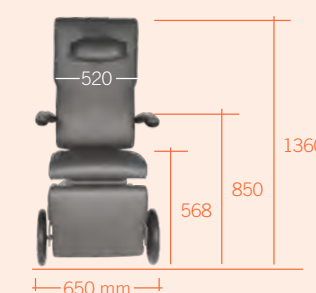
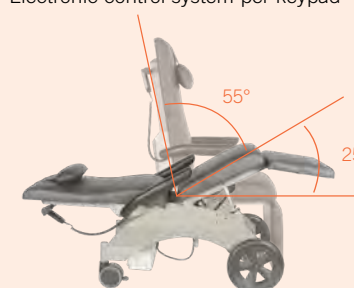
Max. Load 135 kg

Weight 64 kg

Upholstery colors Tundra skai

Standard color anthracite F6461197

Subject to technical modifications.



Please refer to page 63 for the entire range of accessories.

# 400 XL

## ACCESSORIES



PADDED ARM BOARD  
with universal joint, incl.  
mounting clamp  
Order No. 30110000



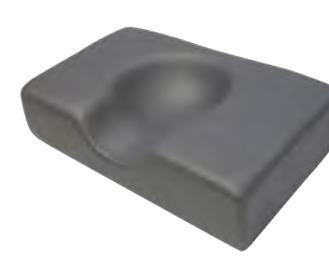
SIDE PARTS  
(right + left) incl. quick-release  
clamp for mounting on norm  
rail, 580x200mm  
Order No. 33510050



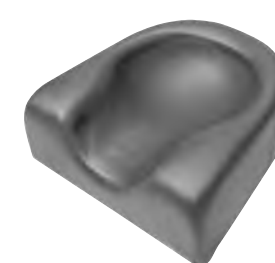
WRIST REST  
incl. mounting plate  
30130000, adjustable  
Order No. 30140000



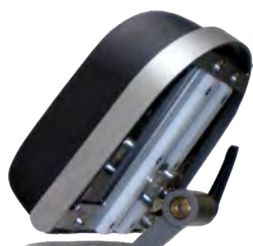
WRIST REST  
incl. mounting plate  
30130000, adjustable, tiltable  
Order No. 30140005



HEAD FIXYTION PILLOW  
with hollow (rubins pillow), 41  
x 25 cm, height: 10 cm  
Order No. 30220000



HEAD FIXATION PILLOW  
WITH HOLLOW  
Order No. 30210000



HEAD PART BUMPER  
stainless steel  
Order No. 30280000



FLEXIBLE SURGICAL DRAPE  
SUPPORT ROD (mounting  
clampt not included)  
with oxygen connection  
Order No. 30330000



FLEXIBLE SURGICAL DRAPE  
SUPPORT ROD (mounting  
clampt not included)  
without oxygen connection  
Order No. 30320000



MOUNTING CLAMP  
poloshed aluminium, with  
quick clamp lever for norm  
rail 25 x 10 mm, incl. locking  
device  
Order No. 30900000



MOUNTING CLAMP  
CNS  
Order No. 30260000



MOUNTING PLATE  
stainless steel for the wrist rest  
30140000  
Order No. 30130000

# 2002

## ACCESSORIES



PADDED ARM BOARD  
with universal joint, incl.  
mounting clamp  
Order No. 30110000



SIDE PARTS  
(right + left) incl. quick-release  
clamp for mounting on norm  
rail, 580x200mm  
Order No. 33510050



HEAD PILLOW WITH HOLLOW  
trapeze, 24.5 x 17.5 x 25 cm,  
height: 10 cm  
Order No. 30410000



BACKUP BATTERY  
Order No. 30470000  
not for motionLine



PAPER TRAY  
transparent, incl. CNS hand-  
hold  
Order No. 30660000



I.V. POLE stainless steel  
ø 25/18 mm, one-hand height-  
adjustable 1070–1660 mm, 4  
hooks, max. 2 kg 84.4lbs/hook,  
glass and holder  
Order No. 30680000



FLEXIBLE SURGICAL DRAPE  
SUPPORT ROD (mounting  
clamp not included)  
with oxygen connection  
Order No. 30330000



FLEXIBLE SURGICAL DRAPE  
SUPPORT ROD (mounting  
clamp not included)  
without oxygen connection  
Order No. 30320000



MOUNTING CLAMP  
CNS  
Order No. 30260000



FOOT PROTECTION FOIL  
Order No. 33190000



INSTRUMENT TABLE  
30 x 20 x 1.3 cm incl. arm,  
adapter and sleeve  
Order No. 33290000



ADAPTER  
for I.V. Pole  
Order No. 30820000

# stayClean

*Practical, single-use cover drape.*



Order No. 30340014/Order No. 30160001

## Take efficiency a step further

To get the operating table up and running again as quickly as possible, we recommend to use the “stayClean”-surgical drapes by UFSK-OSYS.

Available in two different-sized custom fits, they provide a perfectly aseptic liner for every patient. They are impervious to fluids and minimized undesirable soiling of the upholstery. They protect the upholstery material of your treatment chair actively against aggressive fluids and have the treatment chair up and running again much faster. In addition, these surgical drapes keep multi-resistant germs safely away from your patients.



Order No. 30340014



Order No. 30160001



## EQUIPMENT



1. Place the chair cover with the marked arrow facing upwards in the middle of the chair.



2. Unfold first to the left, then repeat from inside to outside.



3. Place the hood over the headrest.



4. Secure the straps onto the corresponding attachment points on both sides. Then move the cover downwards over the foot section.

## ADVANTAGES



### Advantages designed to increase your efficiency

- Easy replacement of used drapes
- Secure fastening thanks to cap, straps, and pre-punched holes
- Enormous time savings
- Low purchasing costs
- The new dispenser boxes are space-saving and fit on every surgery warehouse shelf



### Perfect protection of the equipment

- Protection against corrosion
- 100 % waterproof rear side, absorptive front side
- Minimized soiling of the upholstery
- No sliding thanks to the head pocket



### Perfect protection of the patients

- Creates a barrier against multi-resistant germs
- Protects against cross-contamination

## SUPPLY

### Available in two sizes

- Surgical drape, short  
(covering the head and backrest elements)  
100 x 73 cm, 240 units (4 x 60 units), **Order No. 30160001**
- Surgical drape, long  
(covering the headrest through footrest element)  
200 x 73 cm, 160 units (4 x 40 units), **Order No. 30340014**

### Simply select the ordering mode and supply rhythm of your choice

- Complete delivery or partial delivery
- Partial deliveries are optionally available either as 'on-time deliveries' (deliveries made in accordance with delivery dates agreed in advance) or as 'deliveries on call' by phone, fax, e-mail, or via [www.ufsk-osys.com](http://www.ufsk-osys.com)
- Minimum unit available on-call: 1 carton containing 4 dispensers

## 4 in 1 box - for more organization in your OR



# supportLine

The perfect addition for your OR.



OPHTHALMIC  
SURGERY



AESTHETIC  
SURGERY



DENTAL  
SURGERY



ENT  
SURGERY



MICRO  
SURGERY



ORAL &  
MAXILLOFACIAL

Order No. 33510026 / Order No. 33510045

The supportLine mobile instrument table is designed to be an ergonomic aid to supplement treatment and surgical chairs. Its wide push handle and manoeuvrable double castors make the supportLine easy to position and adjust mechanically to the required height using a foot pedal – even with a load.

The integrated pneumatic spring technology enables the instrument tray to be stopped and positioned smoothly at a suitable working height for the surgeon. The removable, high-quality stainless steel tray is heat-resistant, easy to clean and disinfect and offers plenty of space for holding surgical instruments with an area of 54 cm x 66 cm.

The supportLine's manoeuvrability, optimised stability and resistance to tipping, its stainless steel design for the user's operating area and its hardwearing, hygienic surfaces are designed specifically for versatile use in the operating theatre.

The supportLine plus mobile instrument table is a 20 cm higher Version. The height can be adjusted from 93 cm to 118.5 cm.

Order No.: 33510045



Order No. 33510026



Order No. 33510045



*Infinitely variable height adjustment  
via foot pedal.*

## SPECIFICATIONS

### Chassis

- Footprint 680 x 400 mm
- 4 wheels ø 50 mm

Stainless steel tray 660 x 540 mm

Upper frame 715 x 540 mm

### Lifting Column

- Height adjustment 73–98.5 cm

Weight 17.5 kg

Max. Load 10 kg

*Subject to technical modifications.*

# For all purposes



WRIST SECURE STRAPS  
pair  
Order No. 30150000



BODYSTRAP  
with Velcro 2-piece  
Order No. 30830000



HALF ROUND BOLSTER  
PILLOW  
60 x 28 x 14 cm,  
cushions knees, PUD-coated  
Order No. 30190000



FULL ROUND BOLSTER  
PILLOW  
cushions knees, 50 x 15 cm,  
PUD-coated  
Order No. 30500000



INSTRUMENT TABLE  
"supportLine",  
height adjustable  
Order No. 33510026



INSTRUMENT TABLE  
"supportLine plus",  
height adjustable (20 cm  
higher)  
Order No. 33510045



STAYCLEAN  
treatment chair cover drape  
100 x 73, box à 240 pcs  
Order No. 30160001



STAYCLEAN  
treatment chair cover drape  
200 x 73, box à 160 pcs  
Order No. 30340014

**stayClean**  
Practical, single-use cover drape



Order No. 30340014

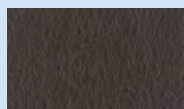


# „Tundra skai“

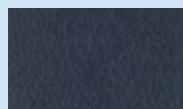
Color table eyeForce, 500 XLE, 500 XLE comfort, 500 XLS, 500 bariatric, 400 XL, surgiLine, assistLine, motionLine and motionLine-E.



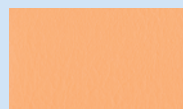
schwarz F6461195  
Art.Nr.: 30370050



schoko F6461357  
Art.Nr.: 30370060



ocean F6461204  
Art.Nr.: 30370055



apricot F6461458  
Art.Nr.: 30370066



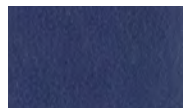
agave F6461273  
Art.Nr.: 30370006



anthrazit F6461197  
Art.Nr.: 30370052



bordeaux F6461350  
Art.Nr.: 30370010



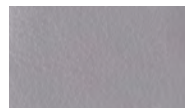
royal F6461196  
Art.Nr.: 30370051



kirsche F6461199  
Art.Nr.: 30370054



türkis F6461338  
Art.Nr.: 30370008



chrom F6461205  
Art.Nr.: 30370056



orchidee F6461354  
Art.Nr.: 30370011



atoll F6461453  
Art.Nr.: 30370062



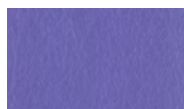
feuer F6461454  
Art.Nr.: 30370063



mais F6461457  
Art.Nr.: 30370065



silber F6461550  
Art.Nr.: 30370070



violett F6461356  
Art.Nr.: 30370059



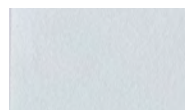
sky F6461581  
Art.Nr.: 30370073



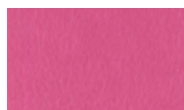
karneol F6461557  
Art.Nr.: 30370072



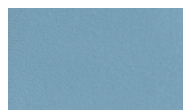
limonade F6461343  
Art.Nr.: 30370009



perle F6461288  
Art.Nr.: 30370007



cyclame F6461381  
Art.Nr.: 30370119



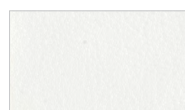
bleu F6461496  
Art.Nr.: 30370068



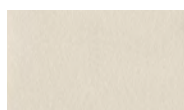
orange F6461556  
Art.Nr.: 30370071



limone F6461543  
Art.Nr.: 30370109



weiss F6461198  
Art.Nr.: 30370134



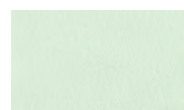
sand F6461230  
Art.Nr.: 30370058



dolphin F6461609  
Art.Nr.: 30370076



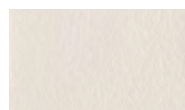
safran F6461542  
Art.Nr.: 30370069



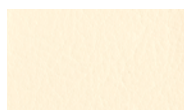
pistazio F6461610  
Art.Nr.: 30370153



aqua F6461456  
Art.Nr.: 30370001



creme F6461210  
Art.Nr.: 30370057



beige F6461636  
Art.Nr.: 30370094



stone F6461608  
Art.Nr.: 30370075



mango F6461607  
Art.Nr.: 30370074



smaragd F6461455  
Art.Nr.: 30370064



mint F6461495  
Art.Nr.: 30370067



The printed colors may differ slightly from the original colors.  
If you wish to receive original color charts please contact us at [info@ufsk-osys.com](mailto:info@ufsk-osys.com).



## „Stamskin top“

Color table surgiForce, surgiTrend 22000010 and assistTrend.

				
F4340-10120 Art.Nr.: 30370023	F4340-20130 Art.Nr.: 30370084	F4340-07422 Art.Nr.: 30370016	F4340-20150 Art.Nr.: 30370204	F4340-20149 Art.Nr.: 30370212
				
F4340-20162 Art.Nr.: 30370205	F4340-20161 Art.Nr.: 30370206	F4340-20156 Art.Nr.: 30370207	F4340-07496 Art.Nr.: 30370046	F4340-07478 Art.Nr.: 30370037
				
F4340-07432 Art.Nr.: 30370002	F4340-20154 Art.Nr.: 30370208	F4340-07445 Art.Nr.: 30370030	F4340-00002 Art.Nr.: 30370021	F4340-07479 Art.Nr.: 30370038
				
F4340-5347 Art.Nr.: 30370209	F4340-50454 Art.Nr.: 30370210	F4340-20157 Art.Nr.: 30370211	F4340-07459 Art.Nr.: 30370028	F4340-50618 Art.Nr.: 30370220
				
F4340-10295 Art.Nr.: 30370044	F4340-07436 Art.Nr.: 30370020	F4340-07480 Art.Nr.: 30370039	F4340-50621 Art.Nr.: 30370199	F4340-07485 Art.Nr.: 30370034
				
F4340-07476 Art.Nr.: 30370035	F4340-07477 Art.Nr.: 30370036	F4340-20127 Art.Nr.: 30370079	F4340-50619 Art.Nr.: 30370214	F4340-50620 Art.Nr.: 30370213
				
F4340-50622 Art.Nr.: 30370215	F4340-50623 Art.Nr.: 30370216	F4340-5015 Art.Nr.: 30370198	F4340-20129 Art.Nr.: 30370146	

## „Periline“

Color table surgiTrend 22000012, assistPro and easyPro.

		
weiss 010881 Art.Nr.: 30370224	creme 015812 Art.Nr.: 30370225	stein 015813 Art.Nr.: 30370236
		
lemon 016039 Art.Nr.: 30370226	safran 010879 Art.Nr.: 30370227	orange 016040 Art.Nr.: 30370237
		
rot 010878 Art.Nr.: 30370238	lavendel 016042 Art.Nr.: 30370228	aubergine 016041 Art.Nr.: 30370229
		
azur 015815 Art.Nr.: 30370230	saphir 015814 Art.Nr.: 30370231	delft 010766 Art.Nr.: 30370241
		
lime green 016043 Art.Nr.: 30370232	kiwi 015816 Art.Nr.: 30370233	anthracit 016046 Art.Nr.: 30370234
		
light brown 016037 Art.Nr.: 30370239	kastanie 015817 Art.Nr.: 30370240	schwarz 011499 Art.Nr.: 30370235
		
	antistatisch schwarz Art.Nr.: 30370223	

# Regulatory information on the equipment's registration as a medical device



## CLASSIFICATIONS eyeForce

Medical device/Category UFSK-Order No.	Treatment chair 18000000
Active medical product (i.e. electrically operated)	DC battery operated, 24-V safety extra-low voltage
Medical device CE conformity	<p>in the EU: Class I, without measuring function, non-sterile; Conformity assessment procedure in accordance with Appendix VII, Directive 93/42/EWG</p> <p>in the US/FDA: Class I, Conformity assessment procedure in accordance with 21 CFR Part 886, 510(k) Exempt</p>
Performance characteristics in accordance with basic standards	DIN EN 60601-1, DIN EN 60601-1-2
Electrical safety in accordance with: - DIN EN 60 601-1 - DIN EN 60529 - DIN EN 62353	<p>- Protection class II, Type B</p> <p>- Degree of Protection IP24</p> <p>- Technical Safety Inspection Once per year</p>



## CLASSIFICATIONS 500 XLE, 500 XLE comfort

Medical device/Category UFSK-Order No.	Treatment chair 15000006, 15000006 + 30370080
Active medical product (i.e. electrically operated)	DC battery operated, 24-V safety extra-low voltage
Medical device CE conformity	<p>in the EU: Class I, without measuring function, non-sterile; Conformity assessment procedure in accordance with Appendix VII, Directive 93/42/EWG</p> <p>in the US/FDA: Class I, Conformity assessment procedure in accordance with 21 CFR Part 886, 510(k) Exempt</p>
Performance characteristics in accordance with basic standards	DIN EN 60601-1, DIN EN 60601-1-2
Electrical safety in accordance with: - DIN EN 60 601-1 - DIN EN 60529 - DIN EN 62353	<p>- Protection class II, Type B</p> <p>- Degree of Protection IP24</p> <p>- Technical Safety Inspection Once per year</p>



### CLASSIFICATIONS 500 XLS, 500 bariatric

Medical device/Category UFSK-Order No.	Treatment chair 15000005, 15000002
Active medical product (i.e. electrically operated)	DC battery operated, 24-V safety extra-low voltage
Medical device CE conformity	<p>in the EU: Class I, without measuring function, non-sterile; Conformity assessment procedure in accordance with Appendix VII, Directive 93/42/EEG</p> <p>in the US/FDA: Class I, Conformity assessment procedure in accordance with 21 CFR Part 886, 510(k) Exempt</p>
Performance characteristics in accordance with basic standards	DIN EN 60601-1, DIN EN 60601-1-2
Electrical safety in accordance with: - DIN EN 60 601-1 - DIN EN 60529 - DIN EN 62353	<p>- Protection class II, Type B</p> <p>- Degree of Protection IP24</p> <p>- Technical Safety Inspection Once per year</p>



### CLASSIFICATIONS 400 XL, 2002

Medical device/Category UFSK-Order No.	Treatment table 14000001, 12000000
Non-active medical product (i.e. not electrically operated)	Hydraulically-mechanically adjustable
Medical device CE conformity	<p>in the EU: Class I, without measuring function, non-sterile; Conformity assessment procedure in accordance with Appendix VII, Directive 93/42/EEG</p> <p>in the US/FDA: Class I, Conformity assessment procedure in accordance with 21 CFR Part 886, 510(k) Exempt</p>
Quality/performance characteristics and equipment safety	in accordance with the Directive 93/42/EEC Technical Safety Inspection Once per year

# Regulatory information on the equipment's registration as a medical device



## CLASSIFICATIONS *surgiForce, surgiTrend, surgiLine*

Medical device/Category UFSK-Order No.	Surgeon's stool 26000000, 26000001, 22000010, 22000012, 22000008
Active medical product (i.e. electrically operated)	DC battery operated, 24-V safety extra-low voltage
Medical device CE conformity	<p>in the EU: Class I, without measuring function, non-sterile; Conformity assessment procedure in accordance with Appendix VII, Directive 93/42/EWG</p> <p>in the US/FDA: Class I, Conformity assessment procedure in accordance with 21 CFR Part 886, 510(k) Exempt</p>
Performance characteristics in accordance with basic standards	DIN EN 60601-1, DIN EN 60601-1-2
Electrical safety in accordance with: - DIN EN 60 601-1 - DIN EN 60529 - DIN EN 62353	<p>- Protection class II, Type B</p> <p>- Degree of Protection IP24</p> <p>- Technical Safety Inspection Once per year</p>



## CLASSIFICATIONS *motionLine-E*

Medical device/Category UFSK-Order No.	Transport- and relaxing chair 17000001
Active medical product (i.e. electrically operated)	DC battery operated, 24-V safety extra-low voltage
Medical device CE conformity	<p>in the EU: Class I, without measuring function, non-sterile; Conformity assessment procedure in accordance with Appendix VII, Directive 93/42/EWG</p> <p>in the US/FDA: Class I, Conformity assessment procedure in accordance with 21 CFR Part 886, 510(k) Exempt</p>
Performance characteristics in accordance with basic standards	DIN EN 60601-1, DIN EN 60601-1-2
Electrical safety in accordance with: - DIN EN 60 601-1 - DIN EN 60529 - DIN EN 62353	<p>- Protection class II, Type B</p> <p>- Degree of Protection IP24</p> <p>- Technical Safety Inspection Once per year</p>





## CLASSIFICATIONS

### *motionLine*

Medical device/Category UFSK-Order No.	Transport- and relaxing chair 17000000
Non-active medical product (i.e. not electrically operated)	Mechanically adjustable
Medical device CE conformity	<p>in the EU: Class I, without measuring function, non-sterile; Conformity assessment procedure in accordance with Appendix VII, Directive 93/42/EEG</p> <p>in the US/FDA: Class I, Conformity assessment procedure in accordance with 21 CFR Part 886, 510(k) Exempt</p>
Quality/performance characteristics and equipment safety	in accordance with the Directive 93/42/EEC Technical Safety Inspection Once per year



## CLASSIFICATIONS

### *assistTrend, assistPro, easyPro, assistLine*

Medical device/Category UFSK-Order No.	Assistant's stool 25000002, 24000005, 24000009, 24000010, 24000006, 24000013, 24000015
Non-active medical product (i.e. not electrically operated)	Mechanically adjustable
Medical device CE conformity	<p>in the EU: Class I, without measuring function, non-sterile; Conformity assessment procedure in accordance with Appendix VII, Directive 93/42/EEG</p> <p>in the US/FDA: Class I, Conformity assessment procedure in accordance with 21 CFR Part 886, 510(k) Exempt</p>
Quality/performance characteristics and equipment safety	in accordance with the Directive 93/42/EEC Technical Safety Inspection Once per year



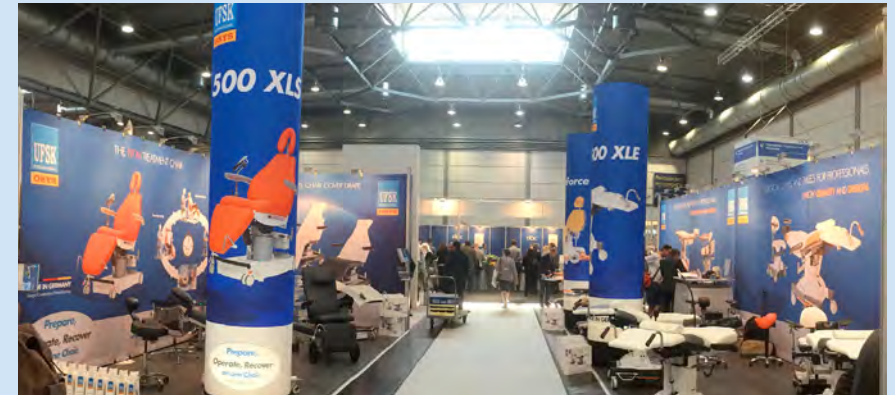
## Location Germany

From our home base in Regensburg we deliver cutting-edge surgical equipment - optimized for out-patient surgical techniques of different medical disciplines. In addition to the global distribution of our products and the best customer service possible, we place great value on our quality management and customer-driven support for questions about the “Regulatory Affairs” of our medical devices. This comprehensive concept of UFSK-management lives through communication both internally and externally - in particular through constant contact with our customers.



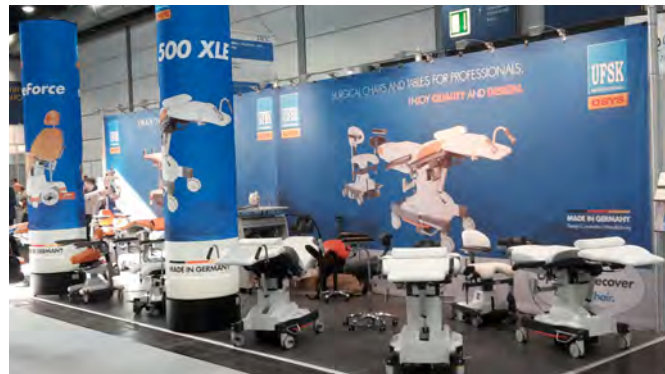


**WE BELIEVE IN THE RESULTS OF SATISFIED CUSTOMER EXPECTATIONS AS THE BASIS OF OUR MOST STRINGENT QUALITY MANAGEMENT**



## ***Global trade shows***

We are also present at international and national trade shows including: American Academy of Ophthalmology; Société Française d'Ophtalmologie; World Ophthalmology Congress; European Society of Cataract & Refractive Surgeons; Internationale Dental-Schau; Augenärztliche Akademie Deutschland; Internationaler Kongress der Deutschen Ophthalmochirurgen; American Society of Cataract and Refractive Surgery; Medica.





**Bring your OR to perfection.**



**eyeForce**



**500 XLE**



**500 XLE comfort**



**500 XLS**



**500 bariatric**



**surgiForce**



**surgiTrend**



**surgiLine**



**assistTrend**



**assistLine**



**assistPro F**



**assistPro H**



**easyPro F**



**easyPro H**



**easyPro R**



**motionLine**



**motionLine-E**



**400 XL**



**2002**



**supportLine**



**supportLine plus**



**stayClean**



UFSK-INTERNATIONAL OSYS GmbH  
Kirchhoffstr. 1  
93055 Regensburg  
Germany

phone  
fax  
e-mail  
web

+49 (0) 941 78862 – 15  
+49 (0) 941 78862 – 35  
info@ufsk-osys.com  
ufsk-osys.com

**MADE IN GERMANY**

Design | Construction | Manufacturing