

400 XL

Highly functional, basic hydraulic treatment table.



OPHTHALMIC
SURGERY

Order No. 14000001

ADVANTAGES



- Great freedom of movement and ample legroom for optimum access to the patients
- Sturdy upper frame with standard rails and rugged steel chassis
- Trendelenburg position -13°
- Head joint with angle and height adjustment
- Smooth and solid hydraulics for headrest, backrest and footrest adjustment
- Easy to service and maintain
- Can be used in any location
- Works independently of the power supply and is not affected by fluctuations in the mains voltage



- Outstanding resistance to tipping
- Large-sized double casters for easy and trouble free maneuvering and moving by a single person, person in confined spaces
- Effortless straight running –“Steering Guide” adjustable, manually adjustable wheel via the foot switch
- Central foot brake acting on 4 wheels
- Ergonomically shaped push handles – on the foot end



- Comfortable three-piece cover surface
- Wide and comfortable upholstery in anthracite
- Low access height
- Suitable even for very large patients



EQUIPMENT



Longitudinally-sliding stainless-steel head joint with angle and height adjustment and head pillow without cavity, with radius.



Ergonomically shaped push handles on the foot end.



Foot pedal for hydraulic adjustment of head, back, shock position and overall adjustment up/down— guaranteed to last.



The centralized braking system and directional guidance can be mechanically operated via foot pedal and acts on all 4 wheels.



25 x 10 mm standard rail for the attachment of accessories.



SPECIFICATIONS

Chassis

- Frame profile 50 x 50 mm
- Outside length 1,100 mm
- Outside width 700 mm
- Caster, electrically conductive \varnothing 150 mm

Lifting Column

- Foot hydraulic 650/1,030 mm
- Height adjustment min./max. 2,000 N
- Max. lifting force 1,500 N
- Footrest section 1,200 N
- Backrest section 500 N
- Headrest section 120 bar
- Operating pressure ca. 0.7 liter
- Hydraulic oil, DTE 10 EXCEL 32

Upper Frame

- 3-part support frame (head, back, foot)
- Length 2,000–2,050 mm
- Width 650 mm
- Head adjustment -25°/+25°
- Back adjustment -15°/+55°
- Foot adjustment 0°/+15°
- Trendelenburg -13
- Height adjustment range 380 mm
- Standard stainless steel side rails, both sides 25 x 10 mm
- Upholstery 80 mm

Max. Load

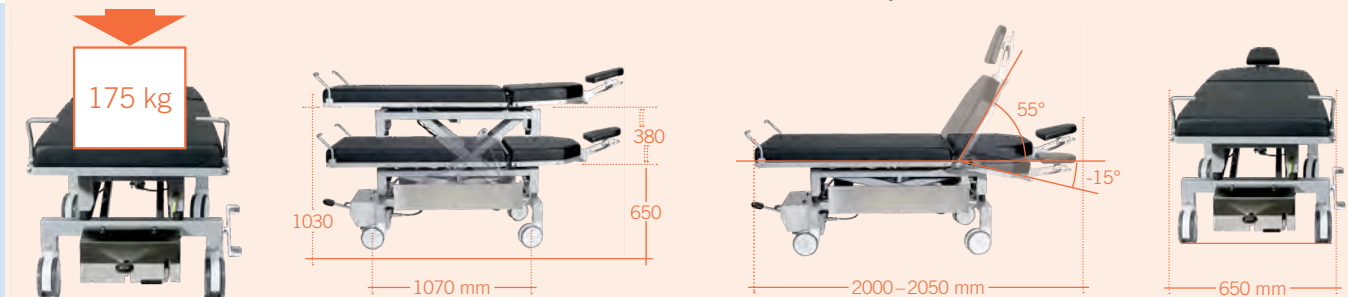
175 kg

Weight

140 kg

Subject to technical modifications.

The 400 XL treatment table can be rotated by 360 degrees to also allow lateral movements. Our entry-level model is based on a rugged and easy-to-use technology. In contrast to our electrically operated models, its function is independent of batteries. This keeps procurement costs low on the one hand and ensures a long service life on the other hand.



Please refer to page 62 for the entire range of accessories.

400 XL

ACCESSORIES



PADDED ARM BOARD
with universal joint, incl.
mounting clamp
Order No. 30110000



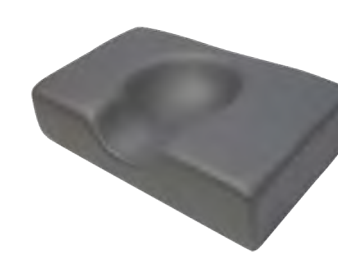
SIDE PARTS
(right + left) incl. quick-release
clamp for mounting on norm
rail, 580x200mm
Order No. 33510050



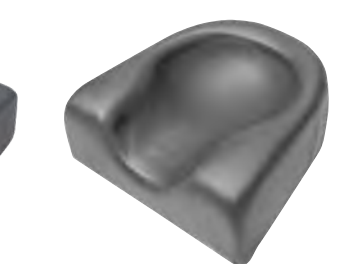
WRIST REST
incl. mounting plate
30130000, adjustable
Order No. 30140000



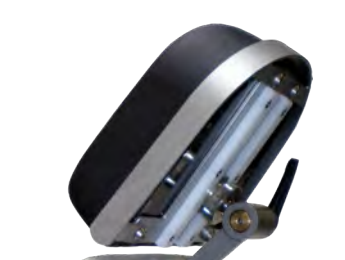
WRIST REST
incl. mounting plate
30130000, adjustable, tiltable
Order No. 30140005



HEAD FIXYTION PILLOW
with hollow (rubins pillow), 41
x 25 cm, height: 10 cm
Order No. 30220000



HEAD FIXATION PILLOW
WITH HOLLOW
Order No. 30210000



HEAD PART BUMPER
stainless steel
Order No. 30280000



FLEXIBLE SURGICAL DRAPE
SUPPORT ROD (mounting
clamp not included)
with oxygen connection
Order No. 30330000



FLEXIBLE SURGICAL DRAPE
SUPPORT ROD (mounting
clamp not included)
without oxygen connection
Order No. 30320000



MOUNTING CLAMP
polished aluminium, with
quick clamp lever for norm
rail 25 x 10 mm, incl. locking
device
Order No. 30900000



MOUNTING CLAMP
CNS
Order No. 30260000



MOUNTING PLATE
stainless steel for the wrist rest
30140000
Order No. 30130000