

# 500 XLE

*The perfect reclining treatment chair  
for rotation systems in outpatient  
operating rooms.*



Order No. 15000006

## ADVANTAGES



- Optimized price-performance ratio
- Ample legroom and unobstructed access to the patient's head
- Space-saving design for flexible use, outstanding maneuverability even in the most confined of spaces
- Multi-functional manual keypad with 4 memory positions and auto-run function
- Automatic switch-off, reactivation button at foot keypad
- Sterile working conditions without interruption thanks to adjustment functions provided by the foot keypad
- Not location-bound thanks to battery operation



- Easy maneuverability thanks to mechanic guidance operated via braking lever
- 360-degree rotating, electrically conductive double casters for outstanding movement characteristics
- Stool & table combination – no need for shifting or relocating the patients
- Service-friendly access for easy cleaning and maintenance
- User-friendly



- Easy mounting and dismounting, low access height
- Comfortable armrests for high patient safety, removable
- Comfortable upholstery in anthracite F6461197 standard shade
- Ergonomic patient positioning





Power supply-independent battery box with integrated emergency stop button.



Removable foot switch with infinite electronic height and head adjustment including reactivation button.



Standard sculptured headrest for high-precision patient positioning, adjustable via manual switches or foot switches.



2 mechanically operated braking levers with steering guide function.



Comfortable armrests for high patient safety, removable.



Electrically conductive double casters for secure positioning and perfect handling characteristics.

## EQUIPMENT



Detachable push handles.

360-degree rotating double casters with full lock and "Steering Guide" function.

Folding-down armrests for simple entry and exit.

Ample legroom for the surgeon – for optimized access to the patient.



Multi-functional manual keypad with positions memory and auto-run function.  
Optional: Hand control holder  
**Order No.: 33510027**

# 500 XLE *comfort*

## 500 XLE

### PREMIUM ACCESSORIES

- Foot part extension
- Removable back part sliding handles
- Side parts incl. quick-release clamp



OPHTHALMIC  
SURGERY



Removeable back part sliding  
handles

Order No.: 33510046



Foot part extension incl. foot  
support for lower patient access  
height

Order No.: 33510049



Removeable back part  
sliding handles

Order No.: 33510046

Side parts  
(right + left)

Order No.: 33510050





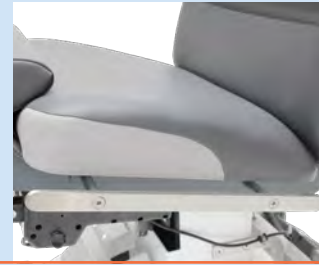
Adjustable foot part extension incl. foot support for easier mounting and dismounting of the patient.



Different positions of the foot part extension.



Side parts right and left prevents lateral slipping of the patient.



Norm rail for seat part for mounting accessories.



Back part sliding handles for maneuvering in lying position.



Back part sliding handles for maneuvering in sitting position.

Side parts (right + left) for mounting on norm rail (Order No.: 33510047), longitudinally adjustable  
Order No.: 33510050



Foot part extension incl. foot support  
Order No: 33510049  
For easier mounting and dismounting of the patient  
The foot part is extendable up to 190 mm.



Removable back part sliding handles, adjustable in different positions.  
Order No.: 33510046

# 500 XLE & 500 XLE *comfort*

## ACCESSORIES



PADDED ARM BOARD  
with universal joint, with wrist  
secure straps  
Order No. 33510011



BACKUP BATTERY  
Order No. 30470000



SIDE PARTS  
(right + left) swiveling incl.  
locking, upholstered  
Order No. 33510012



SIDE PARTS  
(right + left) incl. quick-re-  
lease clamp for mounting on  
norm rail (without norm rail  
33510047) 580x200mm  
Order No. 33510050



FLEXIBLE SURGICAL DRAPE  
SUPPORT ROD  
with oxygen connection  
Order No. 32060000



FLEXIBLE SURGICAL DRAPE  
SUPPORT ROD  
without oxygen connection  
Order No. 32050000



WRIST REST  
incl. mounting plate  
30130000, adjustable  
Order No. 30140000



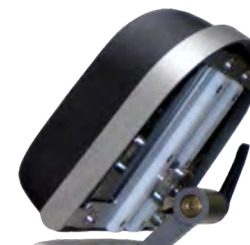
WRIST REST  
incl. mounting plate  
30130000, adjustable, tiltable  
Order No. 30140005



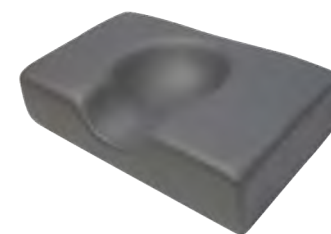
HAND CONTROL HOLDER  
PVC  
Order No. 33510027



HAND CONTROL HOLDER  
for attachment onto an I.V.  
Pole ø 25/18 mm, PVC  
Order No. 33510036



HEAD PART BUMPER  
stainless steel  
Order No. 30280000



HEAD FIXYTION PILLOW  
with hollow (rubins pillow), 41  
x 25 cm, height: 10 cm  
Order No. 30220000

# 500 XLE & 500 XLE comfort

## ACCESSORIES



I.V. POLE stainless steel  
ø 25/18 mm, one-hand height-  
adjustable 1070–1660 mm, 4  
hooks, max. 2 kg 84.4lbs/hook,  
glass and holder  
Order No. 30680000



MONITOR ARM  
stainless steel, swiveling, incl.  
extendible I.V. Pole ø 25 mm  
Order No. 30240014



ACCESSORY MOUNTING  
SUPPORT  
stainless steel  
Order No. 33510037



SLIDING HANDLES  
back part  
Order No. 33510046



ADDITIONAL HANDLES  
pair  
Order No. 33510017



FOOT PART EXTENSION  
incl. foot support  
retrofit kit  
Order No. 33510048  
factory-fitted, upcharge  
Order No. 33510049



FOOT PROTECTION FOIL  
Order No. 30920001



OXYGEN CYLINDER HOLDER  
Order No. 30720002



NORM RAIL  
seat part  
Order No. 33510047



MOUNTING PLATE  
stainless steel for the wrist rest  
30140000  
Order No. 30130000



INSTRUMENT TABLE  
50 x 30 x 1.5 cm, height-ad-  
justable, swiveling, detachable,  
incl. adapter  
Order No. 30650000



SHOULDER PARTS  
right and left  
500 XLE  
Order No. 30710000  
500 XLE comfort  
Order No. 30710001

# **500 XLE & 500 XLE comfort**

## **REFERENCES**



**CLINIQUE JULES VERNES**  
NANTES, FR

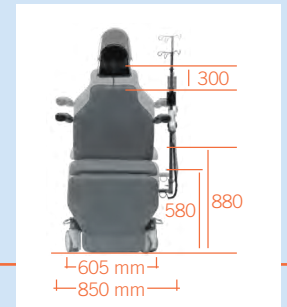
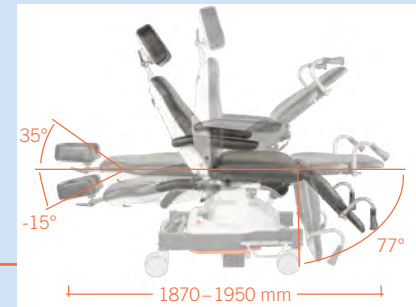
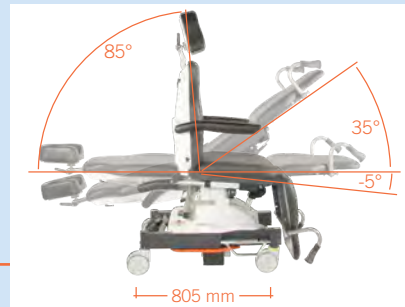


**AUGENKLINIK HERZOG CARL THEODOR**  
MÜNCHEN, DE

FURTHER REFERENCES: [UFSK-OSYS.COM/REFERENCES](https://www.ufsk-osys.com/references)

# 500 XLE

## 500 XLE comfort



## SPECIFICATIONS

### Chassis

- Frame profile 90 x 50 mm
- Outside length 805 mm
- Outside width 605 mm
- Width incl. armrest 850 mm
- Zinc undercoat, elegant anthracite matte finish
- Brake operable from both sides and acting on two (2) wheels each; 2 wheels featuring independent directional wheel positioning
- Double rimmed casters ø 125 mm
- Detachable foot keypad (total up/down, head up/down)
- Emergency stop button
- Visible screws are stainless steel
- With equipotential bonding connection

### Lifting Column

- Max. lifting force 300 mm
- Max. patient weight 250 kg
- Motors IPX4 with HAL sensoric, to be memorized

### Upper Frame

- 4-part support frame (head, back, seat, foot)
- Length 1,870–1,950 mm
- Width 610 mm

- Access height 580 mm
- Removeable upholstery
- Tundra skai colors see color chart

	Max. Load	Angle	Dimensions (l x w)
- Head part	20 kg	-15°/+35°	300 x 250 mm
- Back part	90 kg	0°/+85°	610 x 610 mm
- Seat part	90 kg	-5°/+35°	450 x 610 mm
- Leg part	50 kg	0°/+77°	510 x 610 mm
- Trendelenburg		-12°	
- Height adjustment	250 kg		from 580–880 mm
- Armrests	30 kg ea.	0°/+180°	(2 x) 470 x 75 mm

### Electronic Control

- All components according to IPX4
- Manual keypad with 4 individually programmable memory positions, auto-run function, reset button
- Foot keypad with 4 foot switches and reactivation button

### Battery unit

- Battery box with 2 batteries (lead-gel), pollution free, maintenance-free, cadmium-free 2 x 12 V 7.2 Ah
- As back-up-system exchangeable without tools

- Acoustic low voltage signal for discharge protection
- Universal battery charger Input: 100-240 V, Output: 24 V

### Operating Time Per Battery Charge

- Measured by operating circle (Prepare-Operate-Recover) 100 OPs
- Quantity of operating circles depends on individual operation

### Electromotive Drives

- Head, back, seat, foot, total up/down
- Trendelenburg/Reverse Trendelenburg

### Further Technical Details

- Chair has detachable, swiveling armrests made completely with PU foam
- Detachable seat for service friendly access to electric components

Max. Load 250 kg

Weight 135 kg

Subject to technical modifications.